

**BOULEVARD
POINT**



A New Era of Success

Dubai is a city defined by its successes, particularly its majestic, record-breaking landmarks that have attracted worldwide attention. Not only is it a confluence of both Arabic tradition and ultra-modernism, it also offers a melting pot of cultures and nationalities. It is also now home to World Expo 2020, placing it on the forefront of the global stage.

Through the vision of its leader UAE Vice President, Prime Minister and Ruler of Dubai His Highness Sheikh Mohammed Bin Rashid Al Maktoum, and the heart and spirit of its people, Dubai is indeed a city of success.

عصر جديد من النجاحات

تُعرف دبي بإنجازاتها، وبالأخص معالمها الفريدة والفاخرة التي جذبت إليها أنظار العالم. بالإضافة إلى أنها تجمع بين التراث والتقاليد العربية والحدأة المطلقة. فهي كذلك المدينة التي تتعايش وتنصهر فيها مختلف الثقافات والجنسيات. كما أنها الآن المدينة المضيئة لأكسيو 2020، ما يجعلها في مصاف المدن العالمية الرائدة.

بفضل رؤية قائدها نائب رئيس الدولة رئيس مجلس الوزراء حاكم دبي صاحب السمو الشيخ محمد بن راشد آل مكتوم، وحب شعبها، أصبحت دبي مدينة الإنجازات.





Emaar

The Icon of Excellence

Since its inception in 1997, Emaar Properties PJSC has grown to become one of the world's most renowned lifestyle and property developers. With innovation and vision that is second to none, Emaar counts iconic architectural landmarks such as the award-winning developments Burj Khalifa, The Dubai Mall and The Dubai Fountain as just a few of its exemplary accomplishments. The Downtown Dubai project in particular, an all-encompassing multi-faceted development, is a true representation of Emaar's tenacious ambition.

Extending competencies across hospitality, leisure and retail sectors, Emaar is renowned as a developer with extraordinary vision, build quality and foresight in the projects that bear its name.

إعمار أيقونة التميز

منذ بدايتها في عام 1997، تطورت شركة إعمار العقارية لتصبح من أكبر شركات التطوير العقاري في العالم. تمتلك إعمار، التي تتميز بابتكاراتها ورؤيتها الفريدة من نوعها، صروح معمارية استثنائية مثل برج خليفة، دبي مول، ودبي فاونتن بالإضافة إلى العديد من الانجازات المتميزة الأخرى. ويعد مشروع وسط مدينة دبي المتكامل على وجه الخصوص، تجسيدا حقيقيا لتطلعات إعمار الرائعة.

طورت إعمار إمكانياتها في مجال الضيافة والترفيه والبيع بالتجزئة، حتى أصبحت تُعرف برؤيتها الفريدة وجودة مشاريعها والتطلعات بعيدة المدى التي تميز كافة مشاريعها.



Downtown Dubai

Home to the World's Best

Billed as "the most prestigious square kilometre in the world", Emaar's flagship project prides itself on its world-famous assets. The Burj Khalifa, the world's tallest man-made building, The Dubai Mall, the world's largest shopping and entertainment destination, and The Dubai Fountain, the world's tallest performing fountain, are all within walking distance from each other. Vibrant Mohammed Bin Rashid Boulevard is lined with hip cafés and high-street retail establishments, and The Opera District, when completed, is expected to be an integral part of the city's cultural and arts scene for years to come.

وسط مدينة دبي

وجهة الصروح العالمية

يتميز مشروع إعمار، الذي سَيُشَدُّ ليكون « أرقى كيلو متر في العالم»، بما يضمه من صروح عالمية، برج خليفة، أطول مبني في العالم، دبي مول، أكبر وجهة للتسوق والترفيه في العالم، دبي فاوتن، أطول نافورة راقصة في العالم، تقع جميعها على بعد مسافة قصيرة من بعضها البعض، ويضم بوليفارد محمد بن راشد العديد من المطاعم والمحال التجارية، كما يتوقع أن تكون منطقة الأوبرا، بعد اكتمالها، جزءاً متكاملاً من المشهد الحضاري والفني للمدينة على مدى السنوات المقبلة.



Boulevard Point

A New Class of Living

Dubai is known for being a city of many successes. Boulevard Point at Downtown Dubai now sets the bar for location, luxury and investment potential. Nestled within a popular, well-established community, Boulevard Point boasts unparalleled views of The Old Town, and Downtown Dubai.

1 tower. 63 storeys. A way of life that's privy to the select few.

بوليفارد بوينت

حياتك بأسلوبها الجديد

تشتهر دبي بكونها مدينة الإنجازات. ويتميز بوليفارد بوينت في وسط مدينة دبي بموقعه وفخامته وبالفرص الاستثمارية التي يوفرها. يقع هذا المشروع في مجمع حيوي، ويطل بوليفارد بوينت على مناظر خلابة من المدينة القديمة ووسط مدينة دبي.

مبنى واحد، 63 طابق. نمط حياة خاص بالنخبة.

All That is Worthy
كل ما هو مهميز





Luxury Begins At This Point

Boulevard Point is mere minutes from Emaar Square, Boulevard Plaza and DIFC, Dubai's business and financial district, with direct access to The Dubai Mall via link bridge. Located on Mohammed Bin Rashid Boulevard and neighbouring Sheikh Zayed Road, it is a short walk to the iconic Burj Khalifa, The Dubai Fountain, Souk Al Bahar and Dubai Opera.

الفخامة تبدأ في بوليفارد بوينت

يقع بوليفارد بوينت على بعد دقائق قليلة من إعمار سكوير، بوليفارد بلازا، مركز دبي المالي العالمي و منطقة دبي للأعمال والمال ويتصل مباشرة بدبي مول عبر الجسر الرابط. يقع المشروع في بوليفارد محمد بن راشد بالقرب من شارع الشيخ زايد. وعلى بعد خطوات من برج خليفة ودبي فاونتن وسوق البحار ودبي أوبرا.



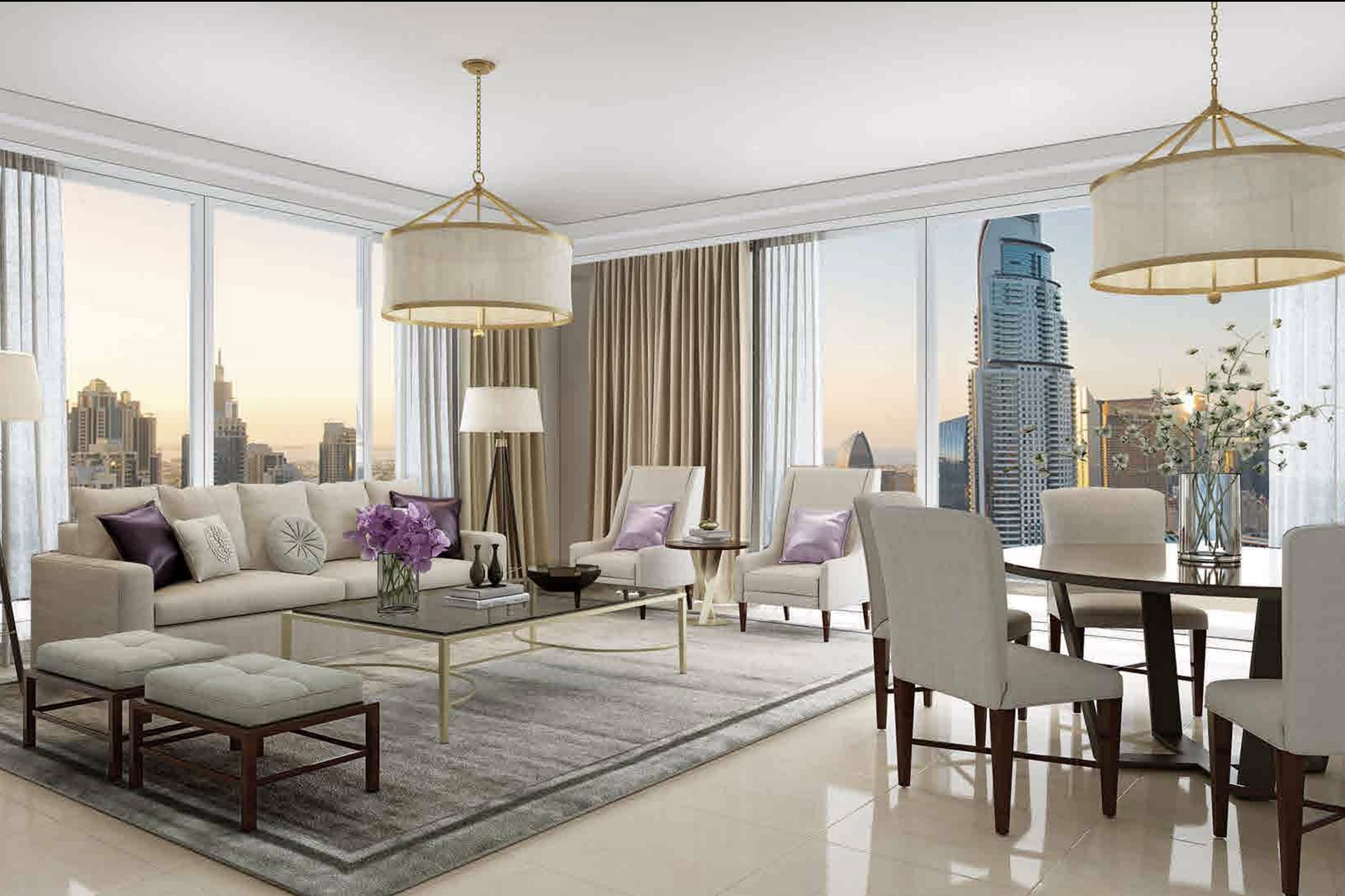
Linking You To The Finest

With excellent connectivity to the rest of the city through Dubai Metro, DIFC and the rest of Downtown Dubai are easily within reach.

اتصالك بالوجهات الأكثر تميّزاً

بالإضافة إلى سهولة الوصول إلى باقي أنحاء المدينة عن طريق مترو دبي، فهو يقع كذلك بالقرب من مركز دبي المالي العالمي ووسط مدينة دبي.





Where You Stay, Says It All

Spaces for exquisite living

Boulevard Point is elegantly outfitted to both reflect and complement the cosmopolitan lifestyles of its inhabitants. Stone countertops, pendant lights and glass panelling enhance each living space with a tasteful, modern aesthetic.

عنوانك، حيث الفخامة

مساحات سكنية متميزة

بوليفارد بوينت يعكس ويكمل نمط الحياة العالمي لقاطنيه. الأسطح الحجرية، الأضواء المتعددة، والألواح الزجاجية تضيء كافة وحداته السكنية وتضفي عليها جمالاً رائعاً وحديثاً.



Be Spoilt for Choice

Heightened experiences, limitless lifestyles

Boulevard Point boasts plenty of excellent facilities and amenities to cater to every lifestyle. Key features include swimming pools, kids' play area, a fully equipped gymnasium, a function lawn and a barbeque area.

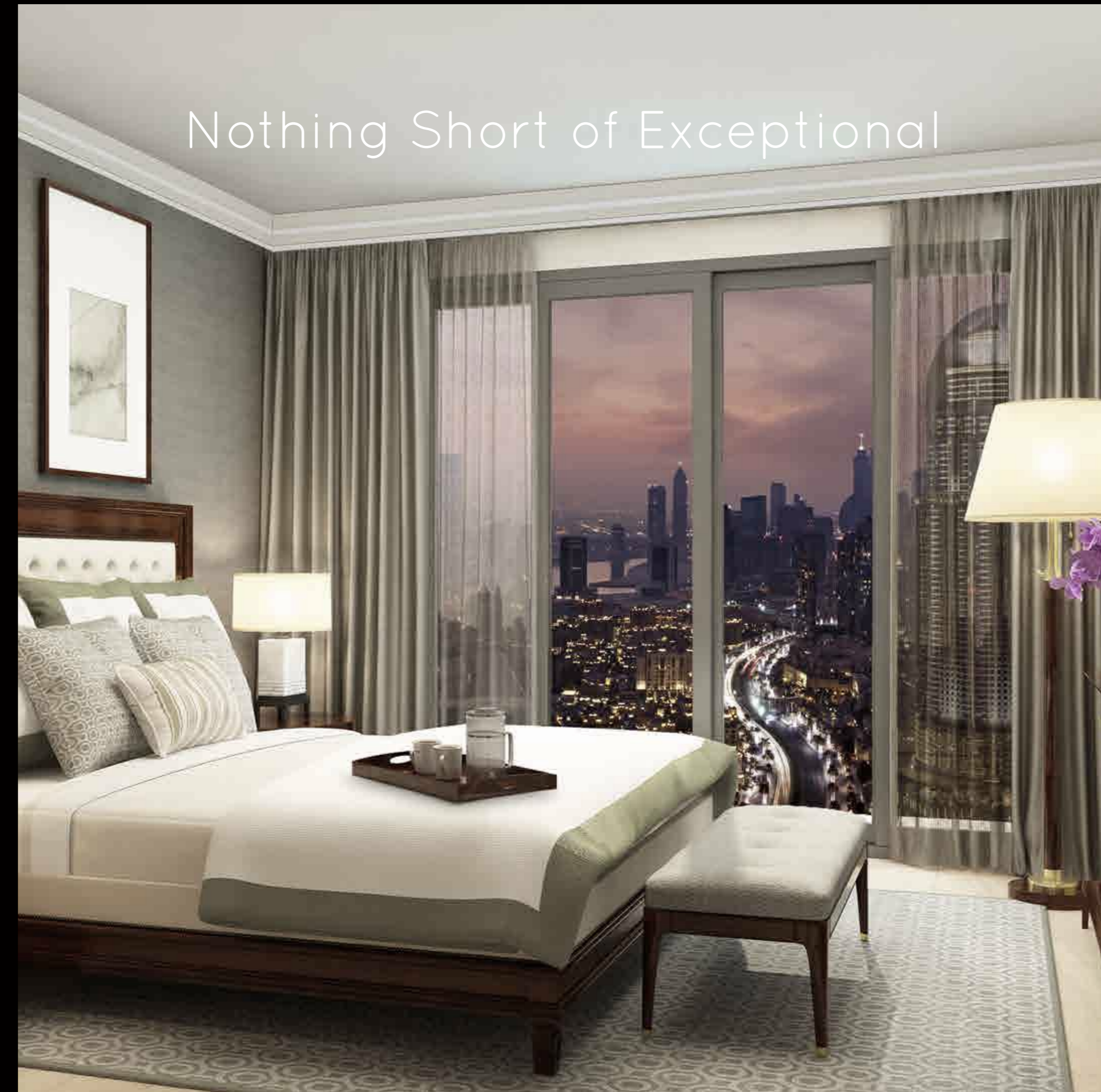
تمتع بالخيارات المتعددة

تجارب رائعة ونمط حياة فريد

يوفر بوليفارد بوينت العديد من المرافق الرائعة ليلاحي كافة متطلبات نمط الحياة العصرية. وتشمل المزايا الرئيسية التي يوفرها هذا المشروع أحواض سباحة، منطقة للعب الأطفال، صالة رياضية مجهزة بالكامل، قاعة مناسبات ومنطقة للشواء.

Where Luxury Lives
حيث تكمن الفخامة







Mohammed Bin Rashid Boulevard

Connecting You To An Unrivalled Quality of Life

An integrated lifestyle destination in a league of its own, Mohammed Bin Rashid Boulevard embodies "living from the ground up". With a decidedly Parisian feel, this thriving thoroughfare offers residents and visitors a chance to experience the energy and life of the city from sidewalk level.

بوليفارد محمد بن راشد يصلك بأسلوب حياة فريد

يعد بوليفارد محمد بن راشد من الوجهات المتميزة والفريدة، فهو يجسد مفهوم الحياة المثالية. بأجواءه الباريسية، يتيح للمقيمين والزوار الاستمتاع بتجربة مثالية مفعمة بالحيوية وحياة المدينة الراقية.

Experiences Like No Other

A selection of distinguished hotels and F&B establishments offering only the best in hospitality and leisure are within proximity to Boulevard Point, each outstanding in their own right. Expect five-star service at the Armani Hotel, The Palace Downtown Dubai, The Address Hotels and Resorts, Al Manzil and VIDA Hotels and Resorts. Indulge in leading luxury dining experiences at La Serre in VIDA Hotel Downtown, Madeleine Café in The Dubai Mall and At.mosphere in Burj Khalifa.

تجارب لا مثيل لها

توجد مجموعة مختارة من الفنادق والمطاعم الراقية التي تقدم أفضل مستويات الضيافة والترفيه بالقرب من بوليفارد بوينت، ينفرد كل منها بروعته الخاصة. خدمة فئة خمس نجوم في فندق أرماني، ذا بالاس وسط مدينة دبي، فنادق ومنتجات العنوان، فندق المنزل وفنادق ومنتجات فيدا. استمتعوا بتجارب الطعام الفاخرة في «الاسير» بفندق فيدا وسط مدينة دبي، كافيه ماديلين في دبي مول وأتموسفير في برج خليفة.





Burj Khalifa

A Soaring Triumph

The Burj Khalifa stands at a lofty 828 metres tall, unprecedented by any other in the world. As the spectacular focal point of Downtown Dubai, the tower is undeniably of monumental importance to Dubai's history and a perfect embodiment of the city's boundless ambition. A definite must-visit is At The Top, Burj Khalifa, an observatory deck which boasts 360° panoramic views of the city, located on level 124.

برج خليفة

صرح شامخ

يصل ارتفاع برج خليفة إلى 828 متر، وهو ارتفاع لم يصل إليه أي مبني آخر في العالم، كونه نقطة الالتقاء المتميزة في وسط مدينة دبي. يعد برج خليفة صرحاً هاماً في تاريخ دبي ويجسد الطموح اللامتناهي لهذه المدينة. "قمة البرج، برج خليفة" هي من الوجهات التي يجب زيارتها، حيث أنها بمثابة مرصد يطل على مناظر المدينة الخلابة وتقع في الطابق 124.

The Dubai Mall

Where style becomes a living statement

Spanning over 12 million square feet, The Dubai Mall is the world's largest shopping and entertainment destination, boasting 1,200 high-end retail outlets, two anchor department stores and over 160 F&B establishments. Recently dedicating 1 million additional square feet to leading names in global fashion, The Dubai Mall's fashion extension will feature 70 signature stores and over 165 new stand-alone brands, with a dedicated circular atrium for top designer labels.

دبي مول أسلوب راقى

يعد دبي مول، الذي يمتد على مساحة 12 مليون قدم مربع، أكبر وجهة للتسوق والترفيه في العالم، حيث يضم 1,200 من محال البيع بالتجزئة الفاخرة، اثنين من المتاجر الكبرى، وأكثر من 160 مطعم، وقد تم مؤخراً تخصيص مليون قدم مربع إضافية لمحال الأزياء العالمية الرائدة، كما سيضم الجزء الإضافي الجديد للأزياء في دبي مول 70 متجر من المتاجر الشهيرة وأكثر من 165 من العلامات التجارية مع ردهة مخصصة لأشهر الماركات.





Truly Exhilarating Moments

For every generation

Boulevard Point residents will undoubtedly enjoy the fantastic range of entertainment and lifestyle options on offer. The Dubai Aquarium & Underwater Zoo, a key attraction loved by all ages, is one of the largest in the world with more than 33,000 aquatic animals. Other notable entertainment hotspots include the Dubai Ice Rink, Kidzania®, a children's edutainment centre, and SEGA Republic, a 76,000 sq ft indoor theme park.

أروع الأوقات لكل الأجيال

سيستمتع مقيمي بوليفارد بوينت بالمجموعة الرائعة التي يوفرها من خيارات الترفيه ومحال اللايف ستايل. دبي أكواريم وحديقة الحيوانات المائية، من المعالم التي يفضلها الجميع. وتعد الأكبر في العالم. حيث تضم أكثر من 33,000 حيوان مائي. وتشمل بقية الوجهات الترفيهية حلبة دبي للتزلج، كيدزانيا، مركز ترفيه الأطفال، وسيغا ريبابلك، وهي مدينة ألعاب مغلقة تصل مساحتها إلى 76,000 قدم مربع.



The Dubai Fountain

A sight to behold

The world's tallest performing fountain, which shoots water jets up to 50 storeys high, is quite a spectacular sight, with gravity-defying water displays and an accompanying light show choreographed to music adding a whole new dimension to the 30-acre lake's lively atmosphere. Famed for the breathtaking The Dubai Fountain Lake Ride, this majestic display sprays over 22,000 gallons of water into the air at any given moment.

دبي فاونتن مشهد رائع

أكبر نافورة راقصة في العالم، يصل ارتفاع المياه التي تطلقها إلى 50 طابق، تتميز بروعة منظرها، مع عروض مياه تتحدى الجاذبية بصاحبها عرض الأضواء على أنغام الموسيقى، لتضيف بعداً جديداً لأجواء البحيرة التي تصل مساحتها إلى 30 فدان، كما تتميز جولة بحيرة دبي فاونتن التي تعرف بمشاهدها الفاتنة، هذا العرض المذهل، الذي ينشر 22,000 جالون من المياه في الهواء في أي وقت.



A Location Beyond Compare

موقع لا يضاهي

World-Class Living At Your Doorstep

أسلوب حياة عالمي بين يديك



BOULEVARD POINT

1 BEDROOM

TERRACE & STUDY

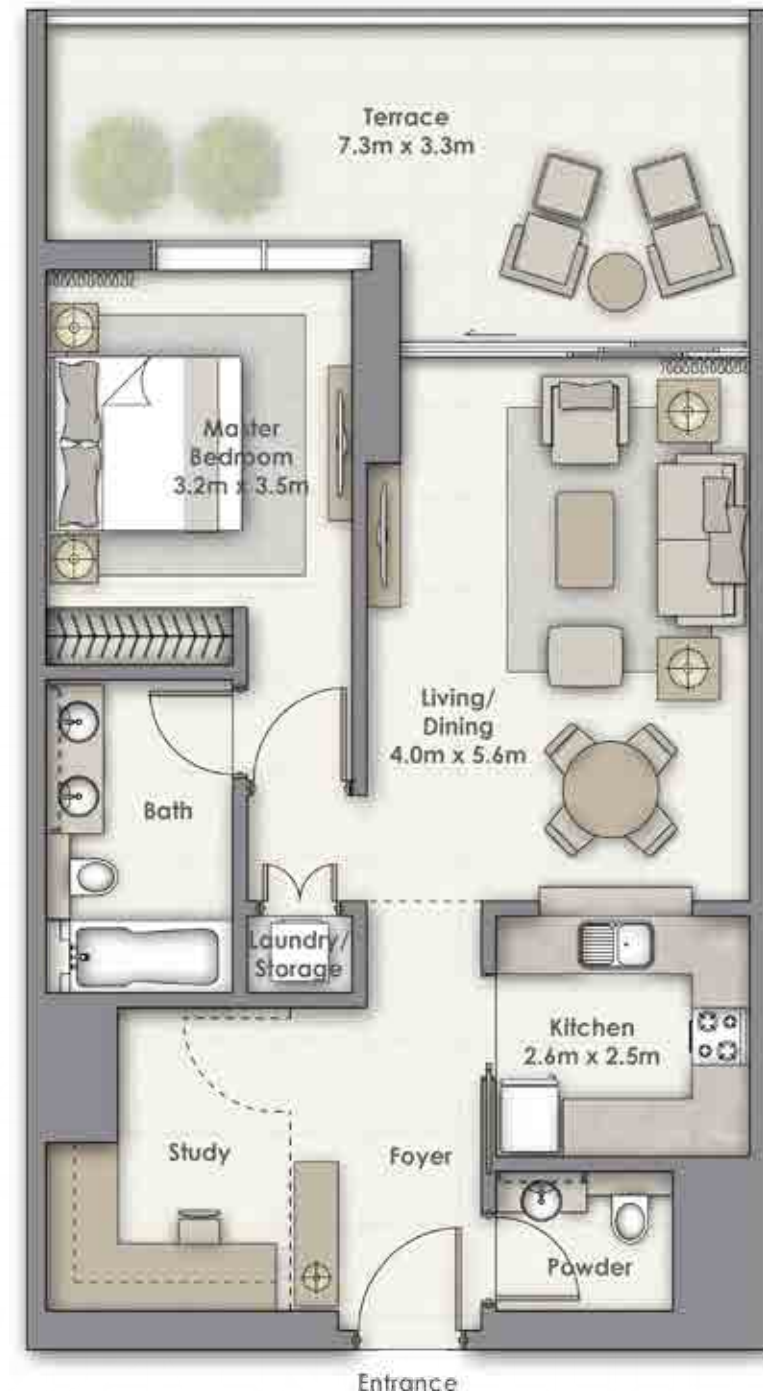
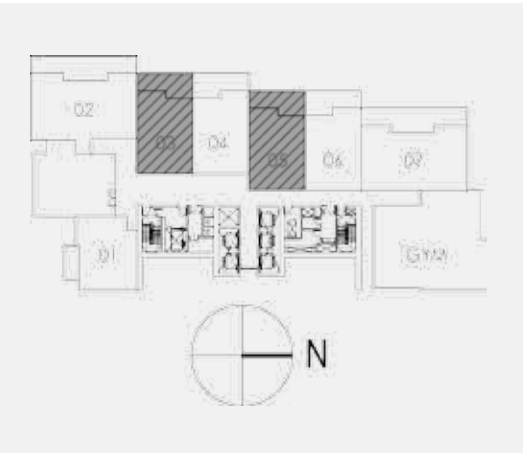
UNIT
03 & 05

LEVEL 12

SUITE AREA
862.47 Sq.ft. / 80.13 Sq.m.

TERRACE AREA
248.18 Sq.ft. / 23.06 Sq.m.

TOTAL AREA
1,110.65 Sq.ft. / 103.19 Sq.m.



BOULEVARD POINT

1 BEDROOM

TERRACE & STUDY

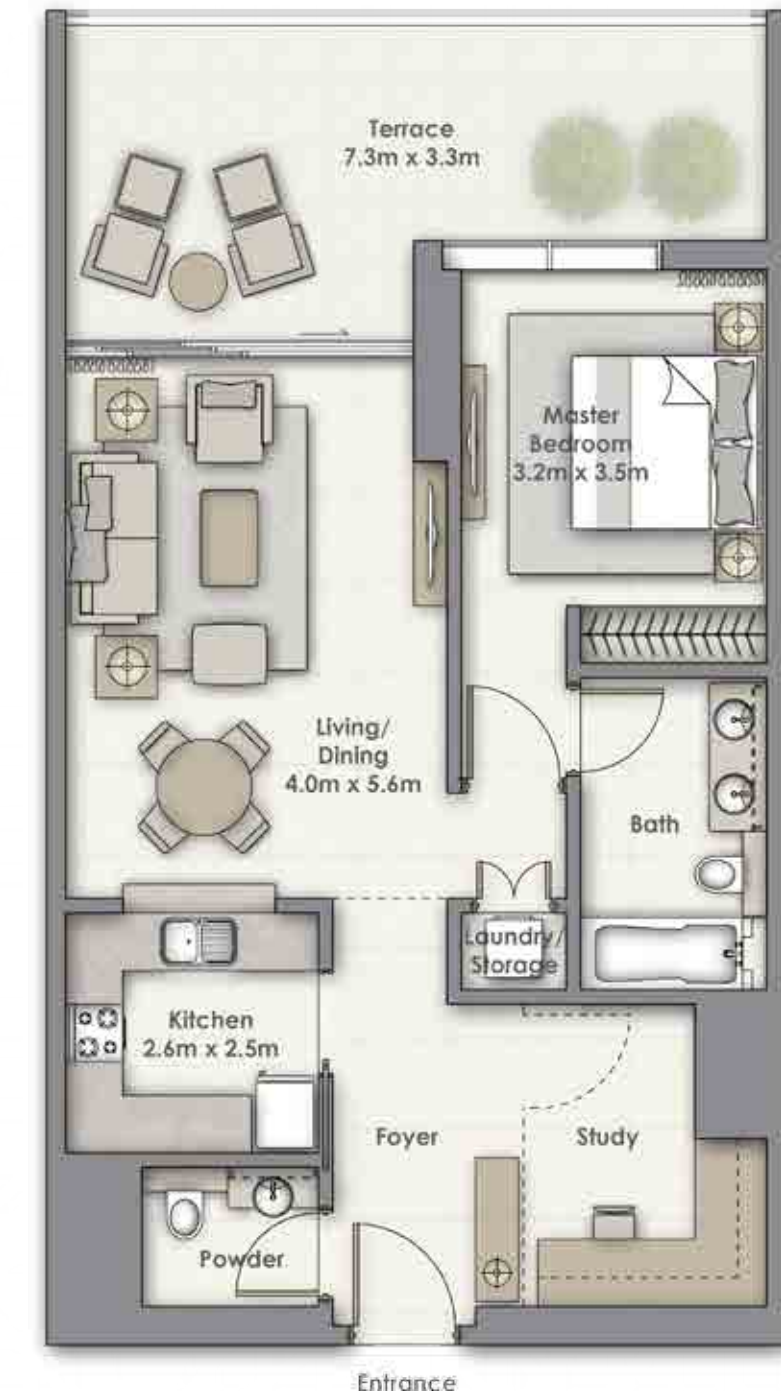
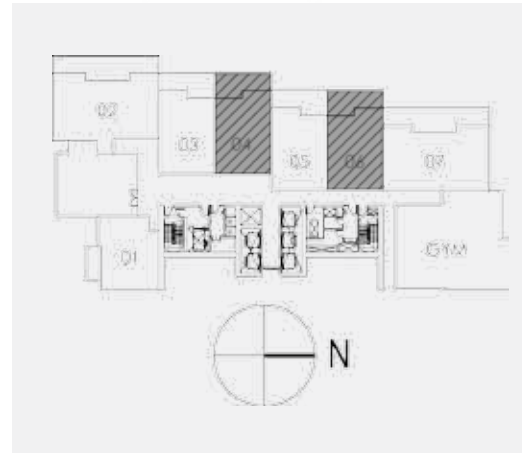
UNIT
04 & 06

LEVEL 12

SUITE AREA
862.39 Sq.ft. / 80.12 Sq.m.

TERRACE AREA
246.97 Sq.ft. / 22.94 Sq.m.

TOTAL AREA
1,109.36 Sq.ft. / 103.06 Sq.m.



Disclaimer: 1. All room dimensions are measured to structural elements and exclude wall finishes and construction tolerances. 2. All dimensions have been provided by our consultant architects. 3. All materials, dimensions & drawings are approximate. Information is subject to change without notice. 4. Actual suite area may vary from the stated area. Drawings not to scale. The developer reserves the right to make revisions. 5. Calculation of suite area is measured as the area bounded by the centre line of demising or partition walls separating one unit from another unit, the exterior face of all exterior walls, and the exterior face of the corridor wall enclosing the adjoining unit. 6. Calculation of balcony area is measured as the area bounded by the centre line of demising or partition walls separating one unit from another unit, the outmost face of the enclosing guard and the external face of the unit adjoining the balcony. 7. The units are measured at typical floor in the building. Columns may vary in size depending on the floor level.



Disclaimer: 1. All room dimensions are measured to structural elements and exclude wall finishes and construction tolerances. 2. All dimensions have been provided by our consultant architects. 3. All materials, dimensions & drawings are approximate. Information is subject to change without notice. 4. Actual suite area may vary from the stated area. Drawings not to scale. The developer reserves the right to make revisions. 5. Calculation of suite area is measured as the area bounded by the centre line of demising or partition walls separating one unit from another unit, the exterior face of all exterior walls, and the exterior face of the corridor wall enclosing the adjoining unit. 6. Calculation of balcony area is measured as the area bounded by the centre line of demising or partition walls separating one unit from another unit, the outmost face of the enclosing guard and the external face of the unit adjoining the balcony. 7. The units are measured at typical floor in the building. Columns may vary in size depending on the floor level.

BOULEVARD POINT

1 BEDROOM

BALCONY & STUDY

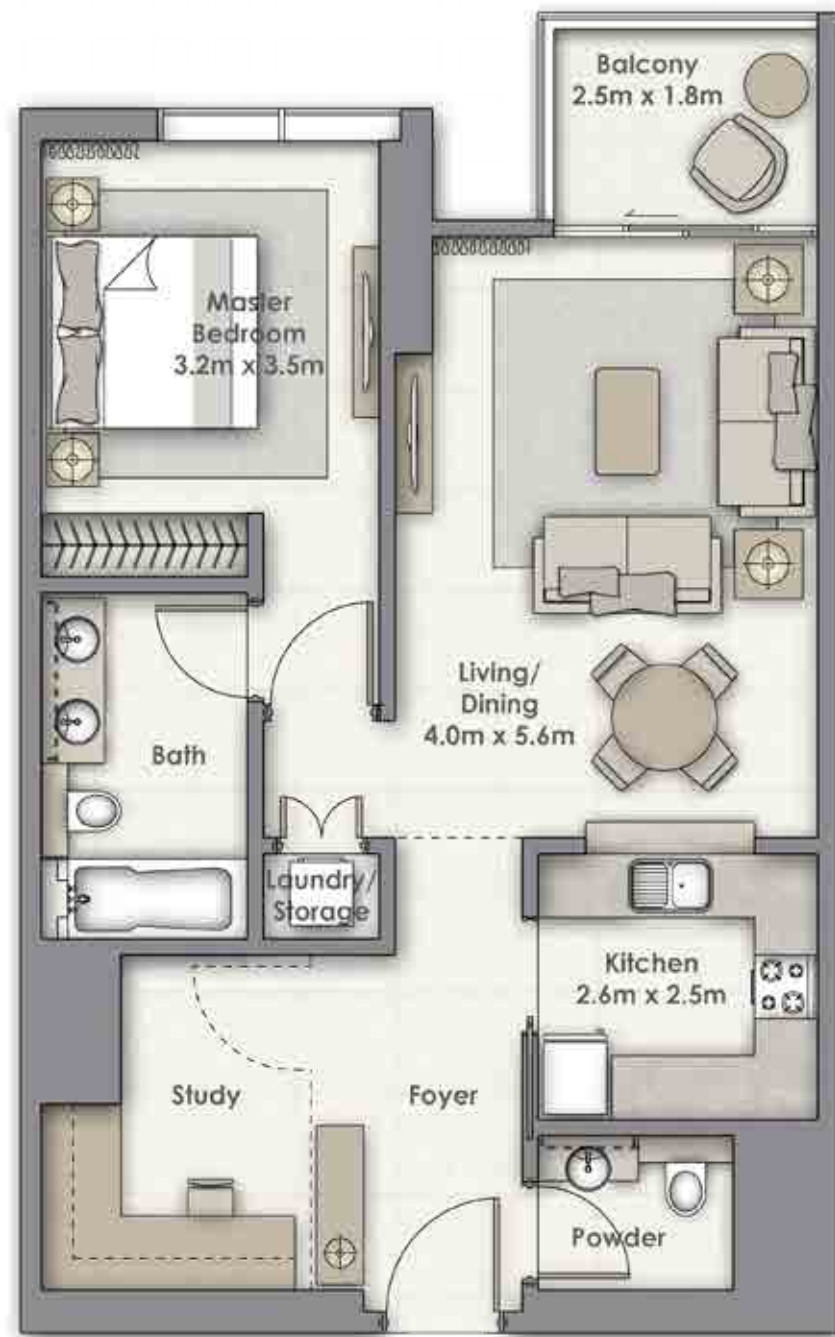
UNIT
03 & 05

LEVEL 13-15

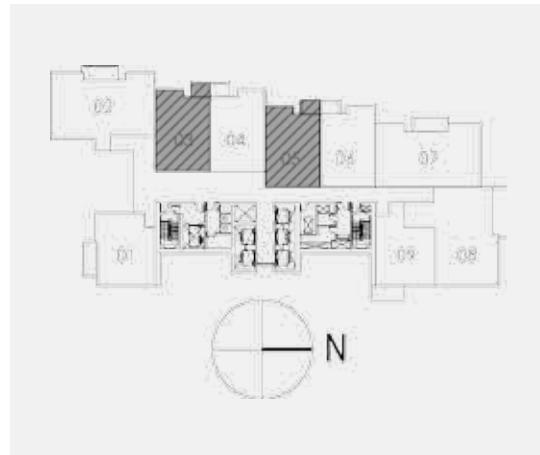
SUITE AREA
861.97 Sq.ft. / 80.08 Sq.m.

BALCONY AREA
58.35 Sq.ft. / 5.42 Sq.m.

TOTAL AREA
920.32 Sq.ft. / 85.50 Sq.m.



Entrance



BOULEVARD POINT

1 BEDROOM

BALCONY & STUDY

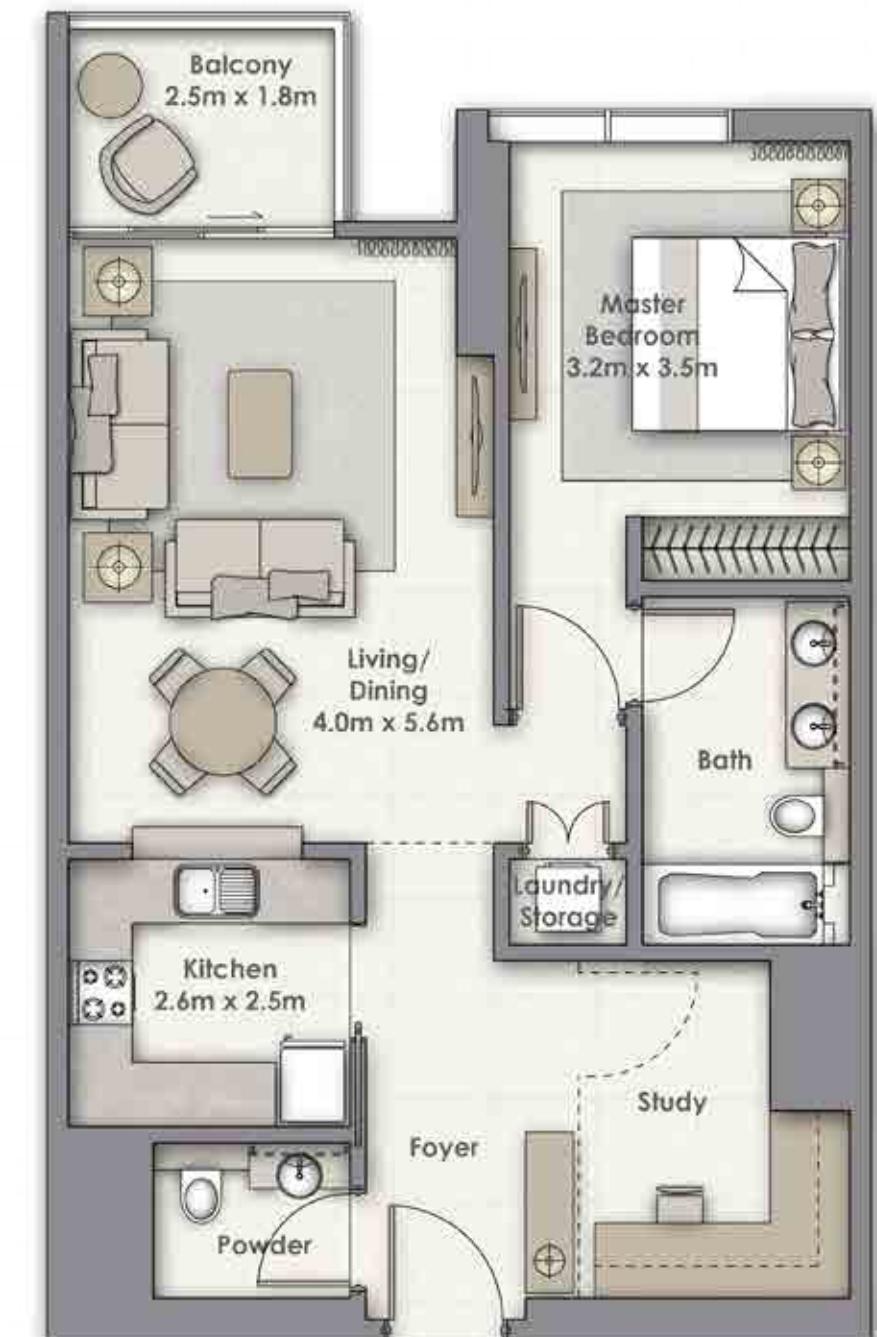
UNIT
04 & 06

LEVEL 13-15

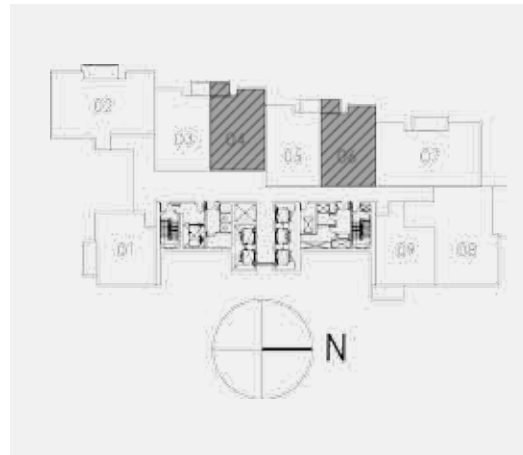
SUITE AREA
862.39 Sq.ft. / 80.12 Sq.m.

BALCONY AREA
58.35 Sq.ft. / 5.42 Sq.m.

TOTAL AREA
920.74 Sq.ft. / 85.54 Sq.m.



Entrance



Disclaimer: 1. All room dimensions are measured to structural elements and exclude wall finishes and construction tolerances. 2. All dimensions have been provided by our consultant architects. 3. All materials, dimensions & drawings are approximate. Information is subject to change without notice. 4. Actual suite area may vary from the stated area. Drawings not to scale. The developer reserves the right to make revisions. 5. Calculation of suite area is measured as the area bounded by the centre line of demising or partition walls separating one unit from another unit, the exterior face of all exterior walls, and the exterior face of the corridor wall enclosing the adjoining unit. 6. Calculation of balcony area is measured as the area bounded by the centre line of demising or partition walls separating one unit from another unit, the outmost face of the enclosing guard and the external face of the unit adjoining the balcony. 7. The units are measured at typical floor in the building. Columns may vary in size depending on the floor level.



Disclaimer: 1. All room dimensions are measured to structural elements and exclude wall finishes and construction tolerances. 2. All dimensions have been provided by our consultant architects. 3. All materials, dimensions & drawings are approximate. Information is subject to change without notice. 4. Actual suite area may vary from the stated area. Drawings not to scale. The developer reserves the right to make revisions. 5. Calculation of suite area is measured as the area bounded by the centre line of demising or partition walls separating one unit from another unit, the exterior face of all exterior walls, and the exterior face of the corridor wall enclosing the adjoining unit. 6. Calculation of balcony area is measured as the area bounded by the centre line of demising or partition walls separating one unit from another unit, the outmost face of the enclosing guard and the external face of the unit adjoining the balcony. 7. The units are measured at typical floor in the building. Columns may vary in size depending on the floor level.

BOULEVARD POINT

1 BEDROOM

BALCONY

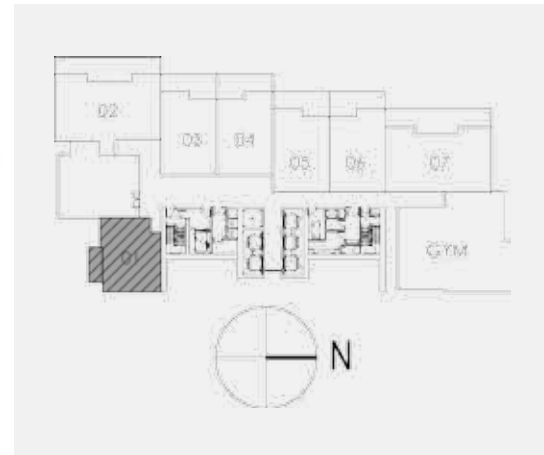
UNIT
01

LEVEL 12-26

SUITE AREA
833.50 Sq.ft. / 77.43 Sq.m.

BALCONY AREA
88.91 Sq.ft. / 8.26 Sq.m.

TOTAL AREA
922.41 Sq.ft. / 85.69 Sq.m.



BOULEVARD POINT

1 BEDROOM

BALCONY

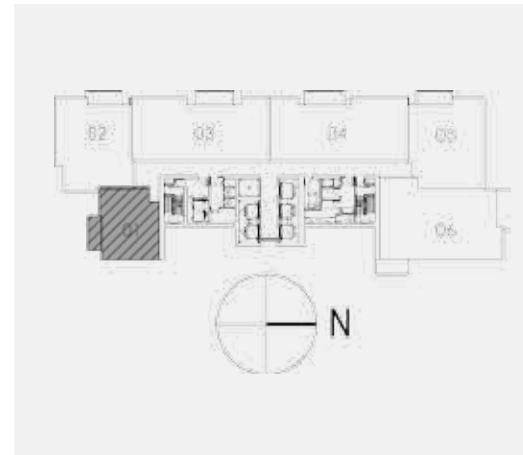
UNIT
01

LEVEL 28-50 & 52-59

SUITE AREA
833.63 Sq.ft. / 77.45 Sq.m.

BALCONY AREA
88.91 Sq.ft. / 8.26 Sq.m.

TOTAL AREA
922.54 Sq.ft. / 85.71 Sq.m.



Disclaimer: 1. All room dimensions are measured to structural elements and exclude wall finishes and construction tolerances. 2. All dimensions have been provided by our consultant architects. 3. All materials, dimensions & drawings are approximate. Information is subject to change without notice. 4. Actual suite area may vary from the stated area. Drawings not to scale. The developer reserves the right to make revisions. 5. Calculation of suite area is measured as the area bounded by the centre line of demising or partition walls separating one unit from another unit, the exterior face of all exterior walls, and the exterior face of the corridor wall enclosing the adjoining unit. 6. Calculation of balcony area is measured as the area bounded by the centre line of demising or partition walls separating one unit from another unit, the outmost face of the enclosing guard and the external face of the unit adjoining the balcony. 7. The units are measured at typical floor in the building. Columns may vary in size depending on the floor level.



Disclaimer: 1. All room dimensions are measured to structural elements and exclude wall finishes and construction tolerances. 2. All dimensions have been provided by our consultant architects. 3. All materials, dimensions & drawings are approximate. Information is subject to change without notice. 4. Actual suite area may vary from the stated area. Drawings not to scale. The developer reserves the right to make revisions. 5. Calculation of suite area is measured as the area bounded by the centre line of demising or partition walls separating one unit from another unit, the exterior face of all exterior walls, and the exterior face of the corridor wall enclosing the adjoining unit. 6. Calculation of balcony area is measured as the area bounded by the centre line of demising or partition walls separating one unit from another unit, the outmost face of the enclosing guard and the external face of the unit adjoining the balcony. 7. The units are measured at typical floor in the building. Columns may vary in size depending on the floor level.

BOULEVARD POINT

1 BEDROOM

BALCONY

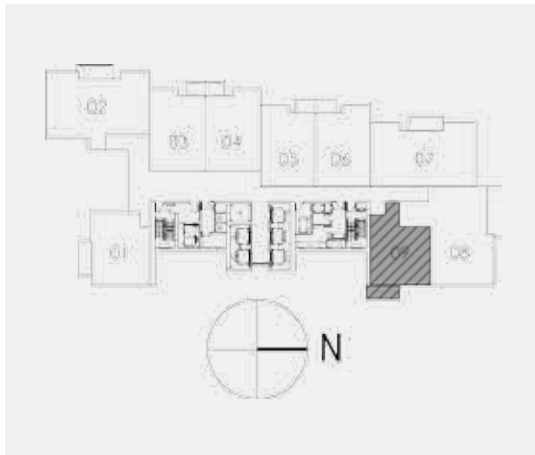
UNIT
09

LEVEL 13-15

SUITE AREA
867.37 Sq.ft. / 80.58 Sq.m.

BALCONY AREA
99.85 Sq.ft. / 9.28 Sq.m.

TOTAL AREA
967.22 Sq.ft. / 89.86 Sq.m.



BOULEVARD POINT

1 BEDROOM

BALCONY

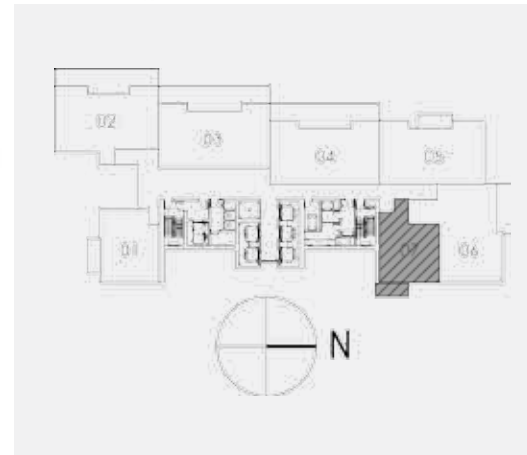
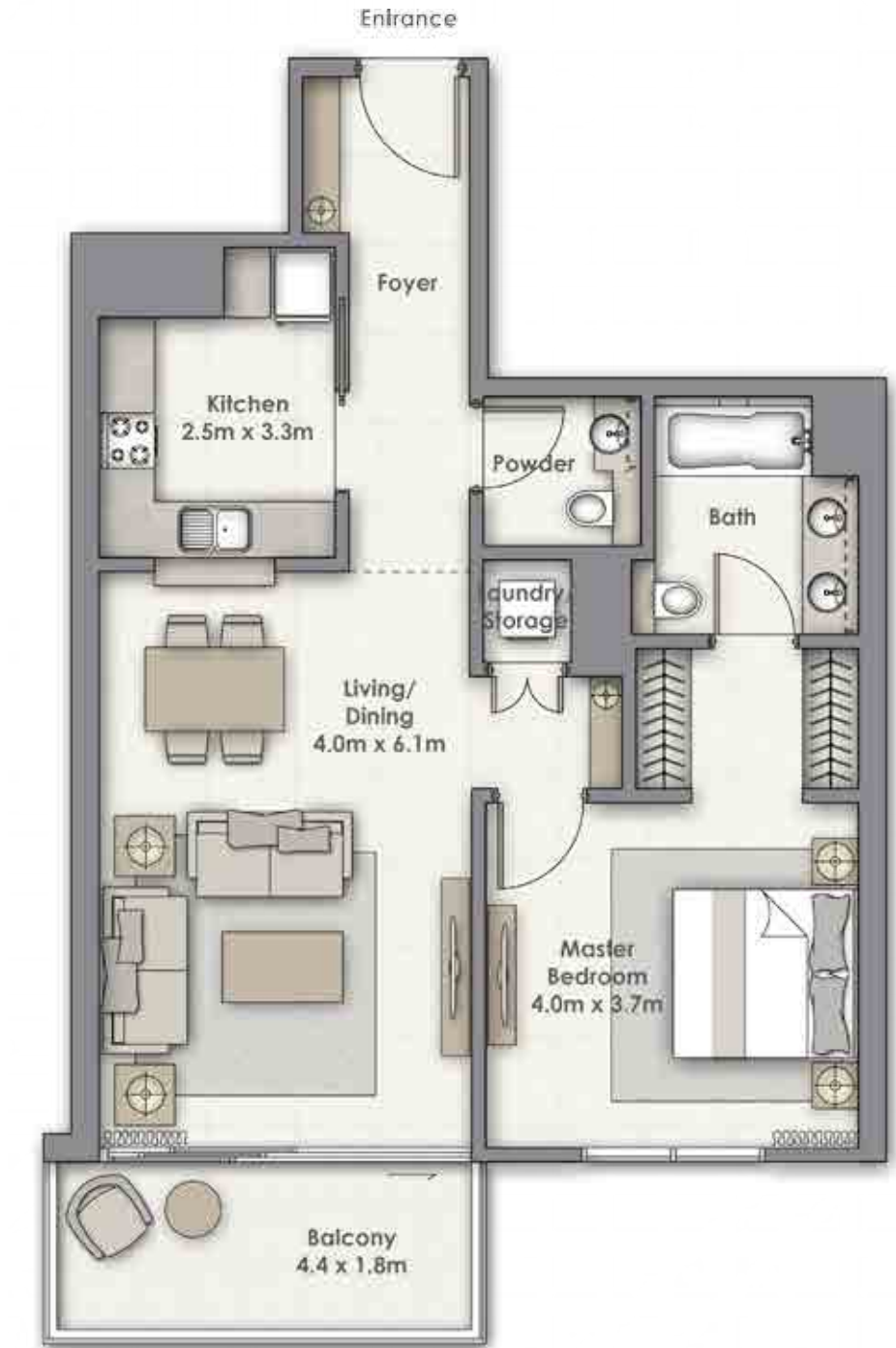
UNIT
07

LEVEL 16-26

SUITE AREA
867.37 Sq.ft. / 80.58 Sq.m.

BALCONY AREA
99.85 Sq.ft. / 9.28 Sq.m.

TOTAL AREA
967.22 Sq.ft. / 89.86 Sq.m.



Disclaimer: 1. All room dimensions are measured to structural elements and exclude wall finishes and construction tolerances. 2. All dimensions have been provided by our consultant architects. 3. All materials, dimensions & drawings are approximate. Information is subject to change without notice. 4. Actual suite area may vary from the stated area. Drawings not to scale. The developer reserves the right to make revisions. 5. Calculation of suite area is measured as the area bounded by the centre line of demising or partition walls separating one unit from another unit, the exterior face of all exterior walls, and the exterior face of the corridor wall enclosing the adjoining unit. 6. Calculation of balcony area is measured as the area bounded by the centre line of demising or partition walls separating one unit from another unit, the outmost face of the enclosing guard and the external face of the unit adjoining the balcony. 7. The units are measured at typical floor in the building. Columns may vary in size depending on the floor level.



Disclaimer: 1. All room dimensions are measured to structural elements and exclude wall finishes and construction tolerances. 2. All dimensions have been provided by our consultant architects. 3. All materials, dimensions & drawings are approximate. Information is subject to change without notice. 4. Actual suite area may vary from the stated area. Drawings not to scale. The developer reserves the right to make revisions. 5. Calculation of suite area is measured as the area bounded by the centre line of demising or partition walls separating one unit from another unit, the exterior face of all exterior walls, and the exterior face of the corridor wall enclosing the adjoining unit. 6. Calculation of balcony area is measured as the area bounded by the centre line of demising or partition walls separating one unit from another unit, the outmost face of the enclosing guard and the external face of the unit adjoining the balcony. 7. The units are measured at typical floor in the building. Columns may vary in size depending on the floor level.

BOULEVARD POINT

2 BEDROOM

TERRACE

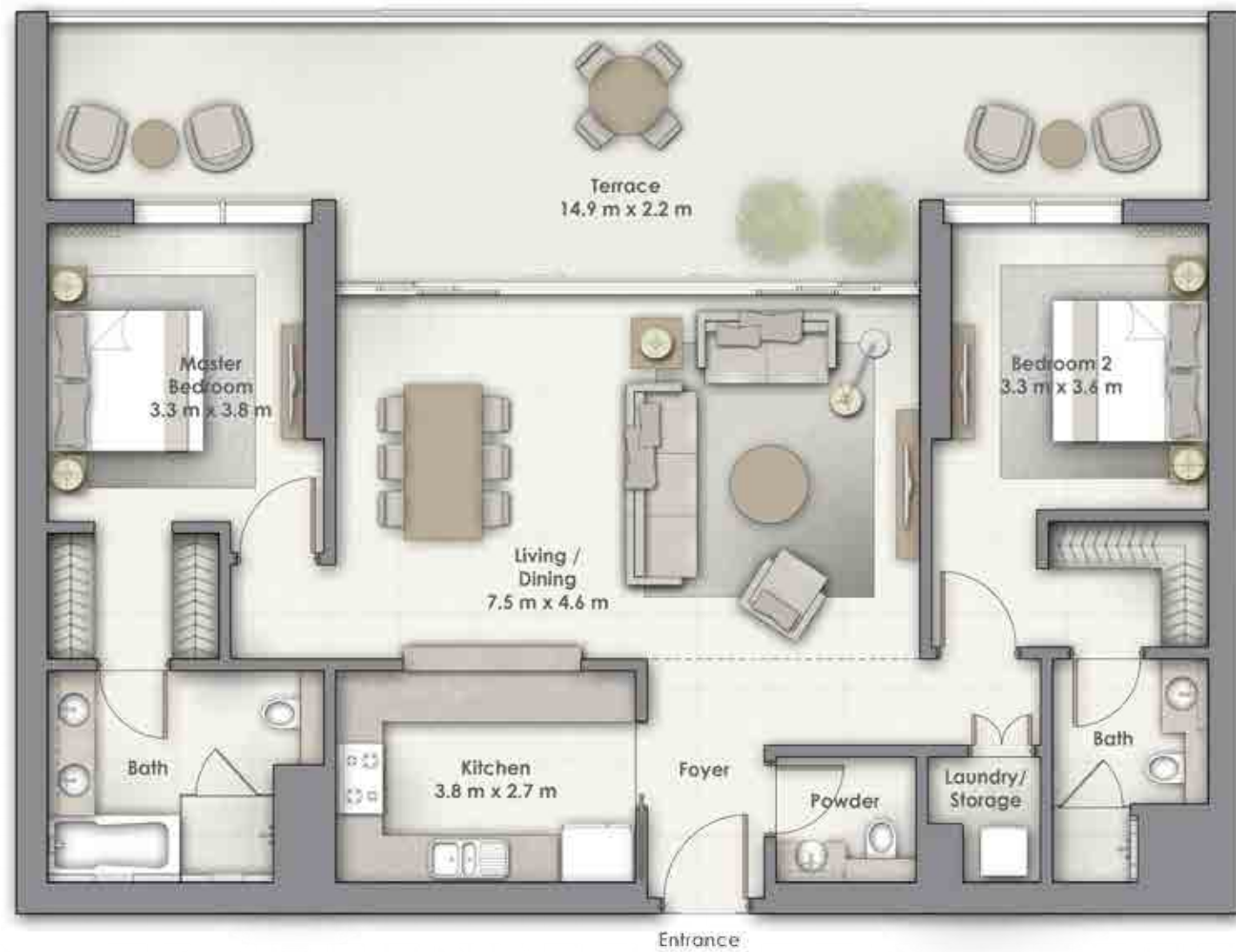
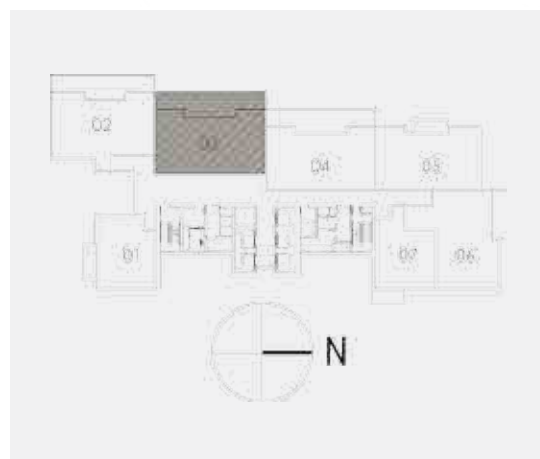
UNIT
03

LEVEL 16

SUITE AREA
1,355.17 Sq.ft. / 125.90 Sq.m.

TERRACE AREA
493.59 Sq.ft. / 45.86 Sq.m.

TOTAL AREA
1,848.76 Sq.ft. / 171.76 Sq.m.



BOULEVARD POINT

2 BEDROOM

TERRACE

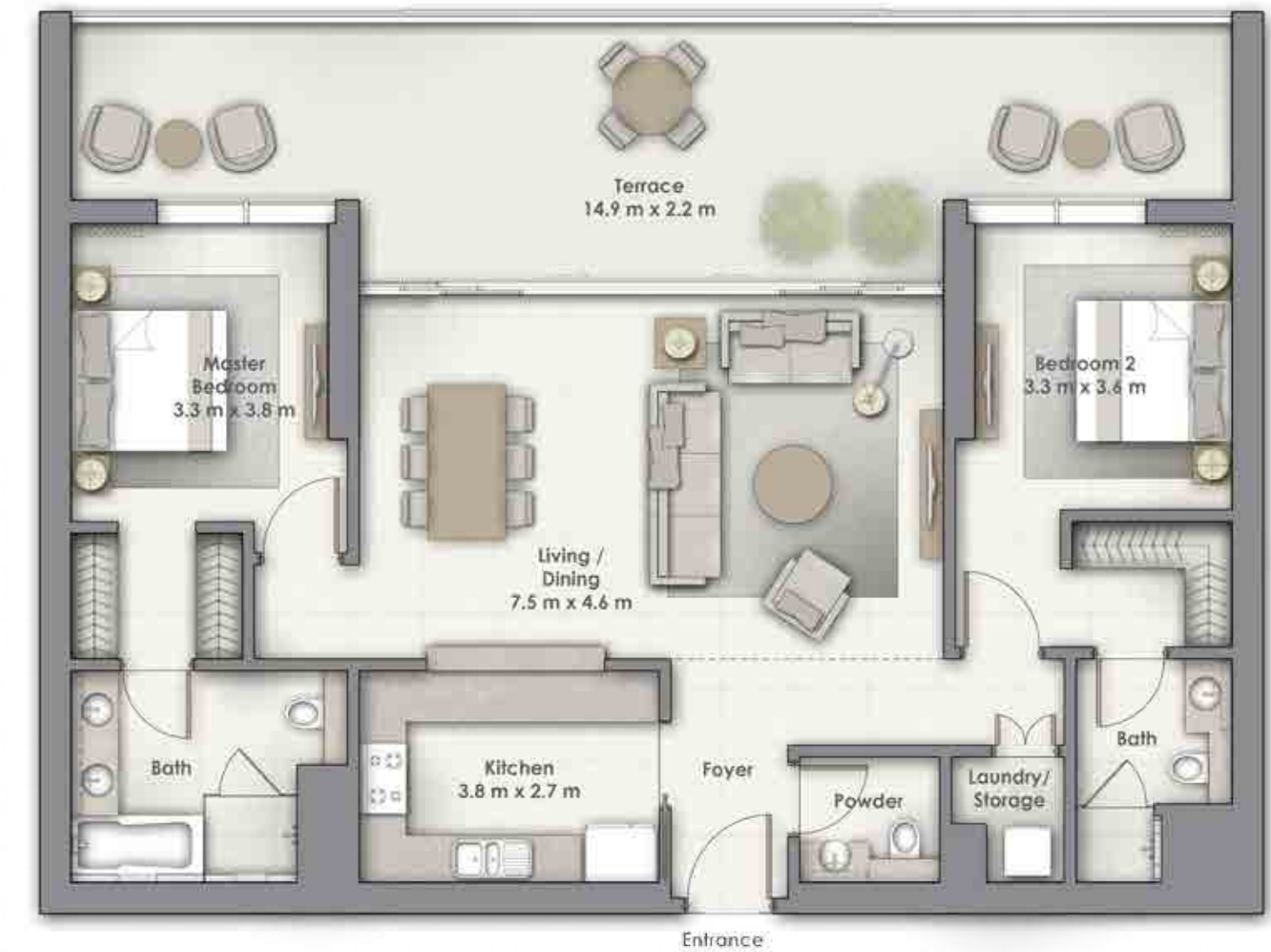
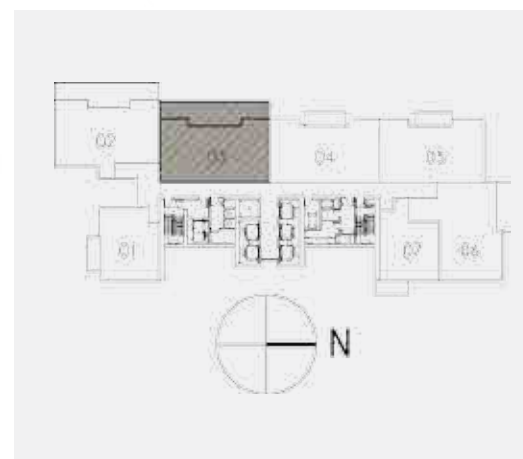
UNIT
03

LEVEL 21

SUITE AREA
1,355.17 Sq.ft. / 125.90 Sq.m.

TERRACE AREA
493.59 Sq.ft. / 45.86 Sq.m.

TOTAL AREA
1,848.76 Sq.ft. / 171.76 Sq.m.



Disclaimer: 1. All room dimensions are measured to structural elements and exclude wall finishes and construction tolerances. 2. All dimensions have been provided by our consultant architects. 3. All materials, dimensions & drawings are approximate. Information is subject to change without notice. 4. Actual suite area may vary from the stated area. Drawings not to scale. The developer reserves the right to make revisions. 5. Calculation of suite area is measured as the area bounded by the centre line of demising or partition walls separating one unit from another unit, the exterior face of all exterior walls, and the exterior face of the corridor wall enclosing the adjoining unit. 6. Calculation of balcony area is measured as the area bounded by the centre line of demising or partition walls separating one unit from another unit, the outmost face of the enclosing guard and the external face of the unit adjoining the balcony. 7. The units are measured at typical floor in the building. Columns may vary in size depending on the floor level.



Disclaimer: 1. All room dimensions are measured to structural elements and exclude wall finishes and construction tolerances. 2. All dimensions have been provided by our consultant architects. 3. All materials, dimensions & drawings are approximate. Information is subject to change without notice. 4. Actual suite area may vary from the stated area. Drawings not to scale. The developer reserves the right to make revisions. 5. Calculation of suite area is measured as the area bounded by the centre line of demising or partition walls separating one unit from another unit, the exterior face of all exterior walls, and the exterior face of the corridor wall enclosing the adjoining unit. 6. Calculation of balcony area is measured as the area bounded by the centre line of demising or partition walls separating one unit from another unit, the outmost face of the enclosing guard and the external face of the unit adjoining the balcony. 7. The units are measured at typical floor in the building. Columns may vary in size depending on the floor level.

BOULEVARD POINT

2 BEDROOM

BALCONY

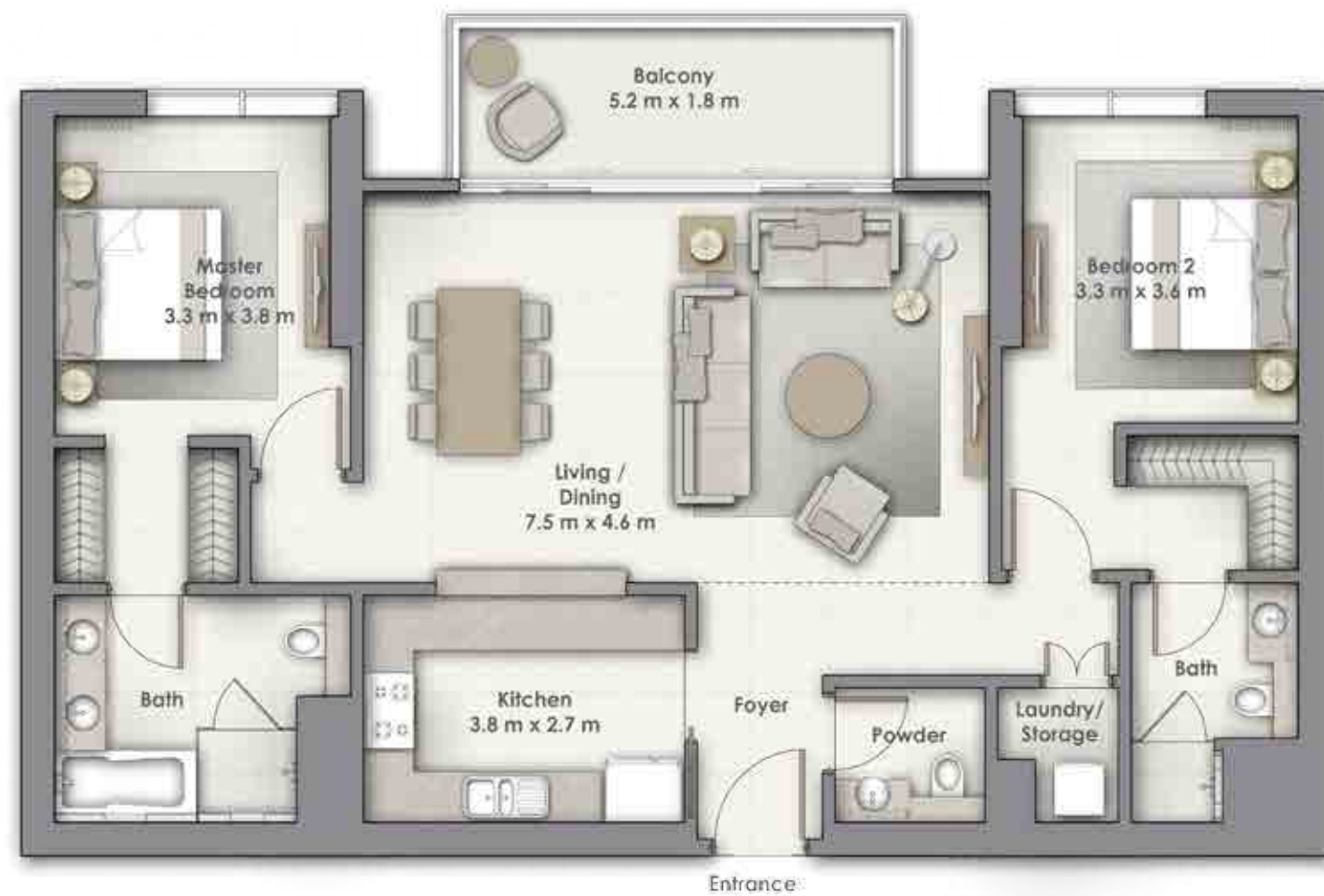
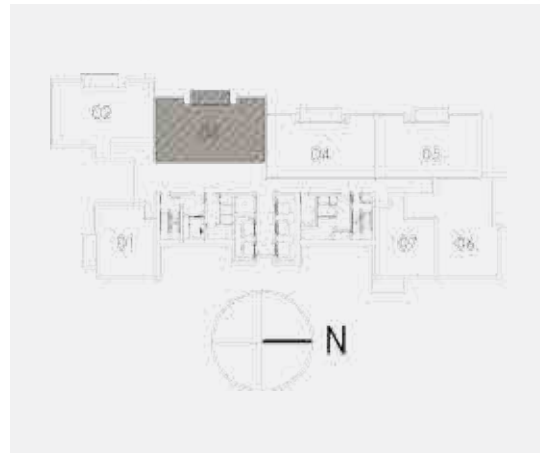
UNIT
03

LEVEL 17-20

SUITE AREA
1,355.17 Sq.ft. / 125.90 Sq.m.

BALCONY AREA
115.30 Sq.ft. / 10.71 Sq.m.

TOTAL AREA
1,470.47 Sq.ft. / 136.61 Sq.m.



BOULEVARD POINT

2 BEDROOM

BALCONY

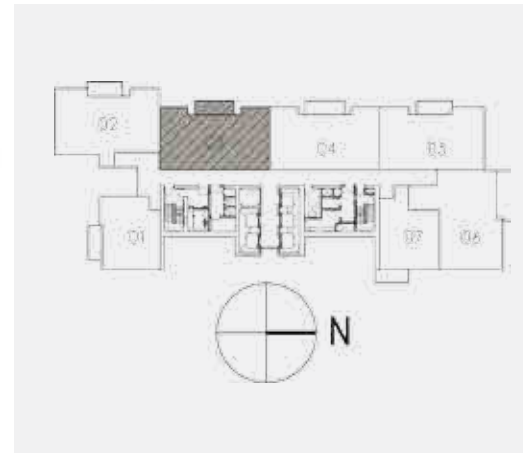
UNIT
03

LEVEL 22-26

SUITE AREA
1,355.17 Sq.ft. / 125.90 Sq.m.

BALCONY AREA
115.30 Sq.ft. / 10.71 Sq.m.

TOTAL AREA
1,470.47 Sq.ft. / 136.61 Sq.m.



Disclaimer: 1. All room dimensions are measured to structural elements and exclude wall finishes and construction tolerances. 2. All dimensions have been provided by our consultant architects. 3. All materials, dimensions & drawings are approximate. Information is subject to change without notice. 4. Actual suite area may vary from the stated area. Drawings not to scale. The developer reserves the right to make revisions. 5. Calculation of suite area is measured as the area bounded by the centre line of demising or partition walls separating one unit from another unit, the exterior face of all exterior walls, and the exterior face of the corridor wall enclosing the adjoining unit. 6. Calculation of balcony area is measured as the area bounded by the centre line of demising or partition walls separating one unit from another unit, the outmost face of the enclosing guard and the external face of the unit adjoining the balcony. 7. The units are measured at typical floor in the building. Columns may vary in size depending on the floor level.



Disclaimer: 1. All room dimensions are measured to structural elements and exclude wall finishes and construction tolerances. 2. All dimensions have been provided by our consultant architects. 3. All materials, dimensions & drawings are approximate. Information is subject to change without notice. 4. Actual suite area may vary from the stated area. Drawings not to scale. The developer reserves the right to make revisions. 5. Calculation of suite area is measured as the area bounded by the centre line of demising or partition walls separating one unit from another unit, the exterior face of all exterior walls, and the exterior face of the corridor wall enclosing the adjoining unit. 6. Calculation of balcony area is measured as the area bounded by the centre line of demising or partition walls separating one unit from another unit, the outmost face of the enclosing guard and the external face of the unit adjoining the balcony. 7. The units are measured at typical floor in the building. Columns may vary in size depending on the floor level.

BOULEVARD POINT

2 BEDROOM

TERRACE

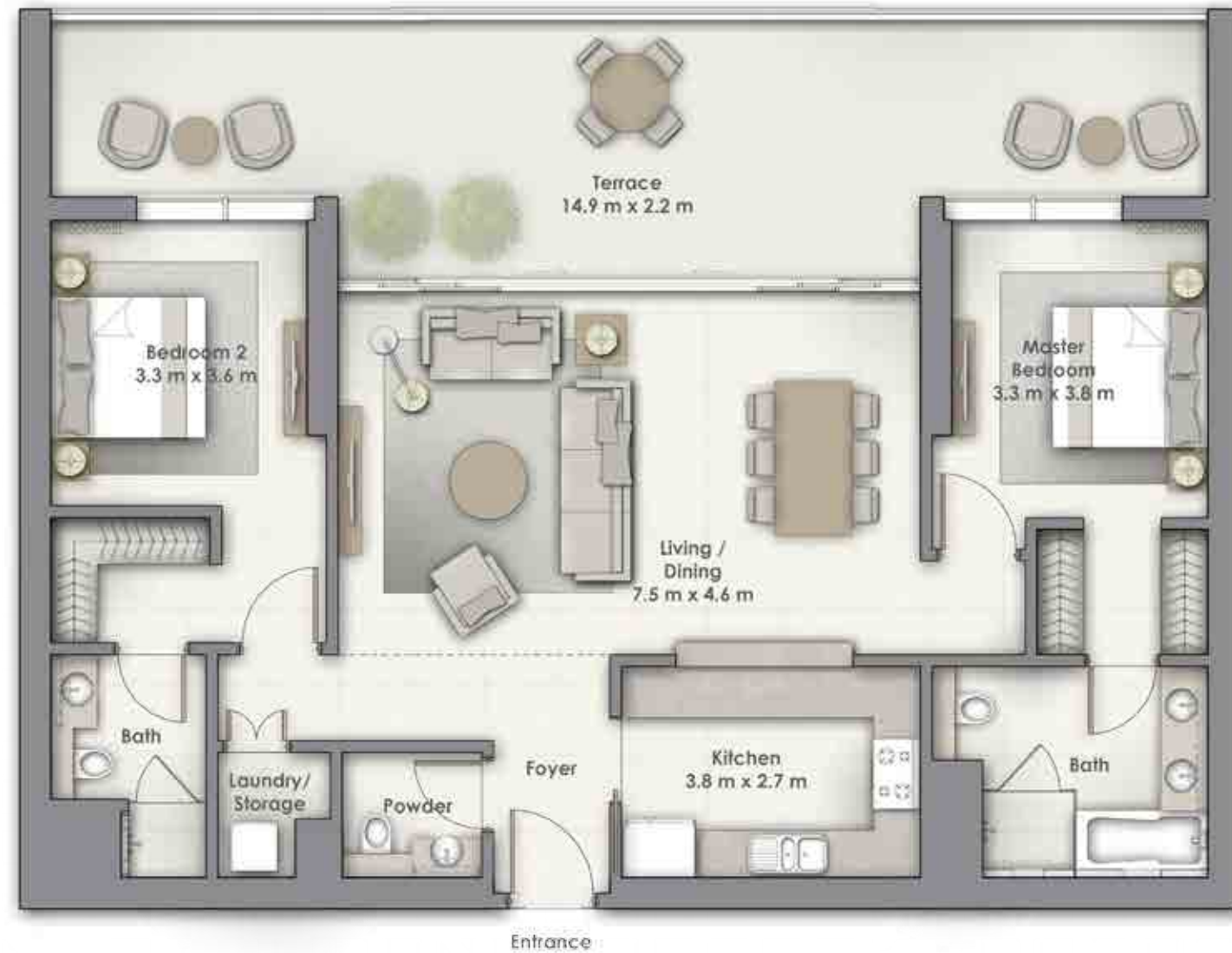
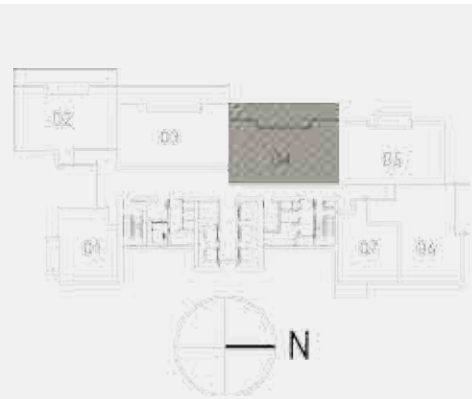
UNIT
04

LEVEL 16

SUITE AREA
1,355.18 Sq.ft. / 125.90 Sq.m.

TERRACE AREA
493.59 Sq.ft. / 45.86 Sq.m.

TOTAL AREA
1,848.77 Sq.ft. / 171.76 Sq.m.



BOULEVARD POINT

2 BEDROOM

BALCONY

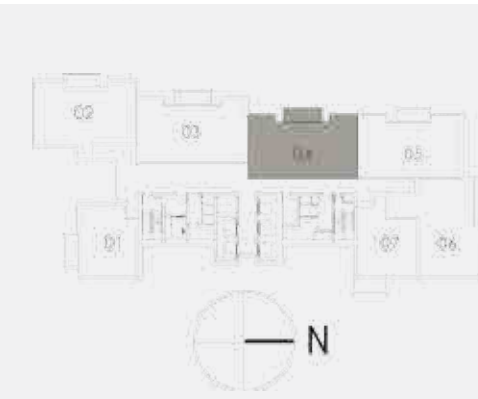
UNIT
04

LEVEL 17-20

SUITE AREA
1,355.18 Sq.ft. / 125.90 Sq.m.

BALCONY AREA
115.30 Sq.ft. / 10.71 Sq.m.

TOTAL AREA
1,470.48 Sq.ft. / 136.61 Sq.m.



Disclaimer: 1. All room dimensions are measured to structural elements and exclude wall finishes and construction tolerances. 2. All dimensions have been provided by our consultant architects. 3. All materials, dimensions & drawings are approximate. Information is subject to change without notice. 4. Actual suite area may vary from the stated area. Drawings not to scale. The developer reserves the right to make revisions. 5. Calculation of suite area is measured as the area bounded by the centre line of demising or partition walls separating one unit from another unit, the exterior face of all exterior walls, and the exterior face of the corridor wall enclosing the adjoining unit. 6. Calculation of balcony area is measured as the area bounded by the centre line of demising or partition walls separating one unit from another unit, the outmost face of the enclosing guard and the external face of the unit adjoining the balcony. 7. The units are measured at typical floor in the building. Columns may vary in size depending on the floor level.



Disclaimer: 1. All room dimensions are measured to structural elements and exclude wall finishes and construction tolerances. 2. All dimensions have been provided by our consultant architects. 3. All materials, dimensions & drawings are approximate. Information is subject to change without notice. 4. Actual suite area may vary from the stated area. Drawings not to scale. The developer reserves the right to make revisions. 5. Calculation of suite area is measured as the area bounded by the centre line of demising or partition walls separating one unit from another unit, the exterior face of all exterior walls, and the exterior face of the corridor wall enclosing the adjoining unit. 6. Calculation of balcony area is measured as the area bounded by the centre line of demising or partition walls separating one unit from another unit, the outmost face of the enclosing guard and the external face of the unit adjoining the balcony. 7. The units are measured at typical floor in the building. Columns may vary in size depending on the floor level.

BOULEVARD POINT

2 BEDROOM

BALCONY

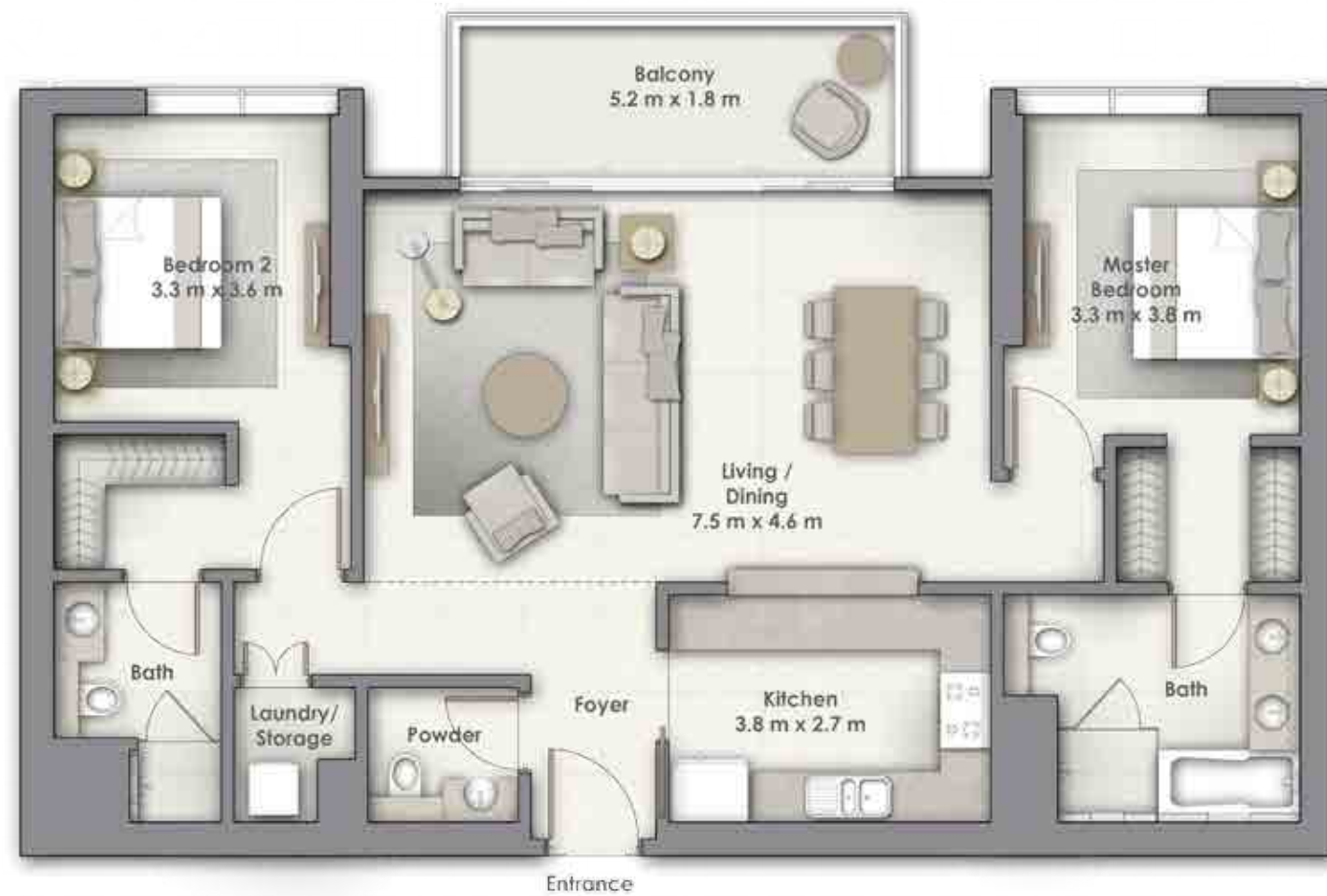
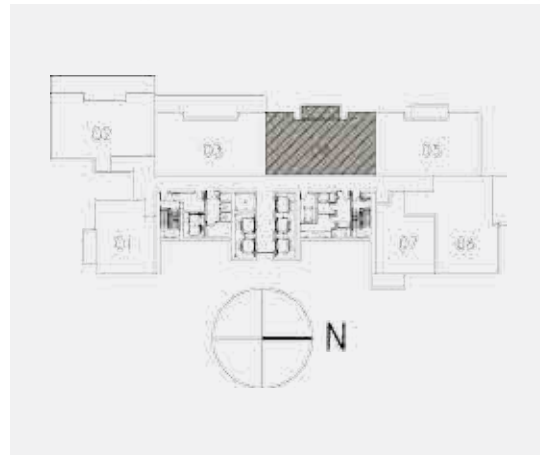
UNIT
04

LEVEL 21

SUITE AREA
1,355.18 Sq.ft. / 125.90 Sq.m.

BALCONY AREA
115.30 Sq.ft. / 10.71 Sq.m.

TOTAL AREA
1,470.48 Sq.ft. / 136.61 Sq.m.



BOULEVARD POINT

2 BEDROOM

BALCONY

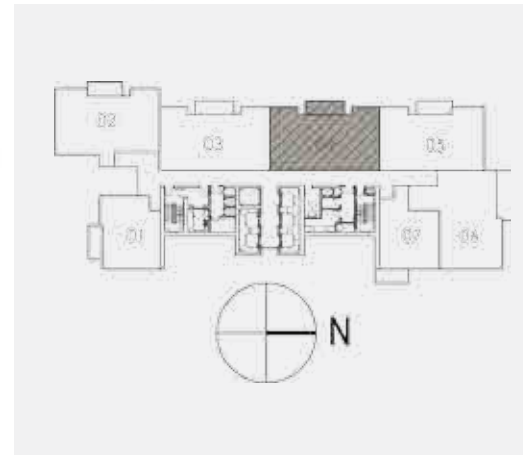
UNIT
04

LEVEL 22-26

SUITE AREA
1,355.18 Sq.ft. / 125.90 Sq.m.

BALCONY AREA
115.30 Sq.ft. / 10.71 Sq.m.

TOTAL AREA
1,470.48 Sq.ft. / 136.61 Sq.m.



Disclaimer: 1. All room dimensions are measured to structural elements and exclude wall finishes and construction tolerances. 2. All dimensions have been provided by our consultant architects. 3. All materials, dimensions & drawings are approximate. Information is subject to change without notice. 4. Actual suite area may vary from the stated area. Drawings not to scale. The developer reserves the right to make revisions. 5. Calculation of suite area is measured as the area bounded by the centre line of demising or partition walls separating one unit from another unit, the exterior face of all exterior walls, and the exterior face of the corridor wall enclosing the adjoining unit. 6. Calculation of balcony area is measured as the area bounded by the centre line of demising or partition walls separating one unit from another unit, the outmost face of the enclosing guard and the external face of the unit adjoining the balcony. 7. The units are measured at typical floor in the building. Columns may vary in size depending on the floor level.



Disclaimer: 1. All room dimensions are measured to structural elements and exclude wall finishes and construction tolerances. 2. All dimensions have been provided by our consultant architects. 3. All materials, dimensions & drawings are approximate. Information is subject to change without notice. 4. Actual suite area may vary from the stated area. Drawings not to scale. The developer reserves the right to make revisions. 5. Calculation of suite area is measured as the area bounded by the centre line of demising or partition walls separating one unit from another unit, the exterior face of all exterior walls, and the exterior face of the corridor wall enclosing the adjoining unit. 6. Calculation of balcony area is measured as the area bounded by the centre line of demising or partition walls separating one unit from another unit, the outmost face of the enclosing guard and the external face of the unit adjoining the balcony. 7. The units are measured at typical floor in the building. Columns may vary in size depending on the floor level.

BOULEVARD POINT

2 BEDROOM

TERRACE

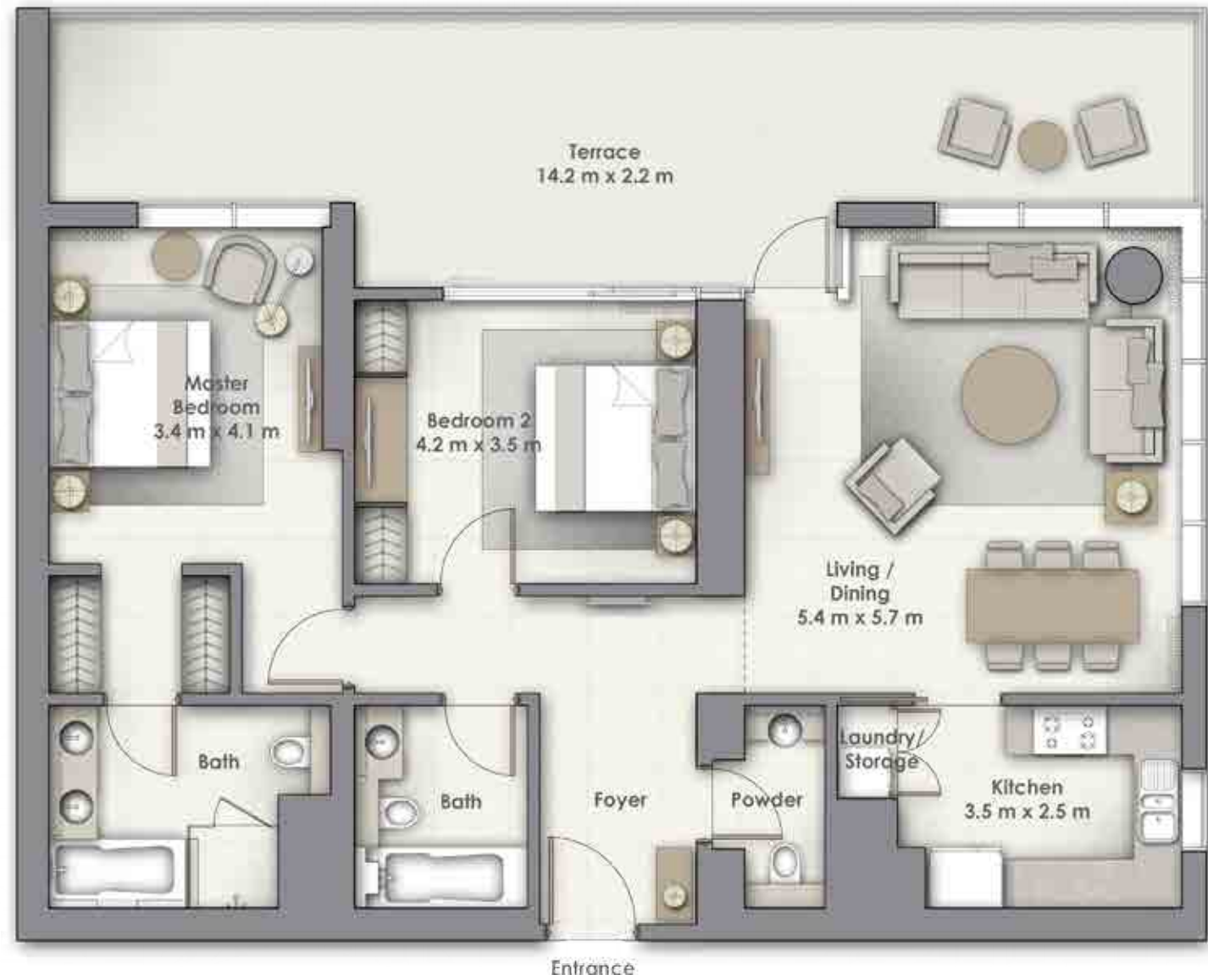
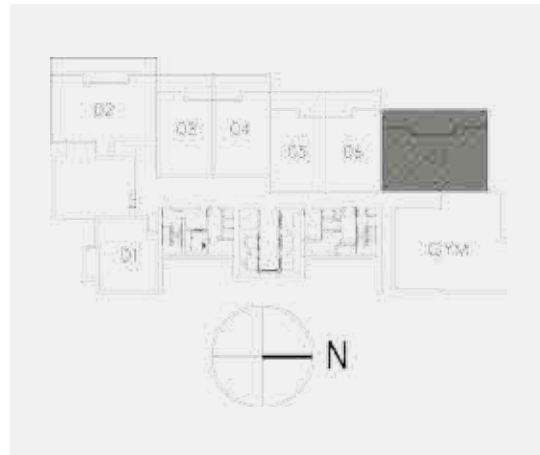
UNIT
07

LEVEL 12

SUITE AREA
1,293.13 Sq.ft. / 120.14 Sq.m.

TERRACE AREA
452.98 Sq.ft. / 42.08 Sq.m.

TOTAL AREA
1,746.11 Sq.ft. / 162.22 Sq.m.



BOULEVARD POINT

2 BEDROOM

BALCONY

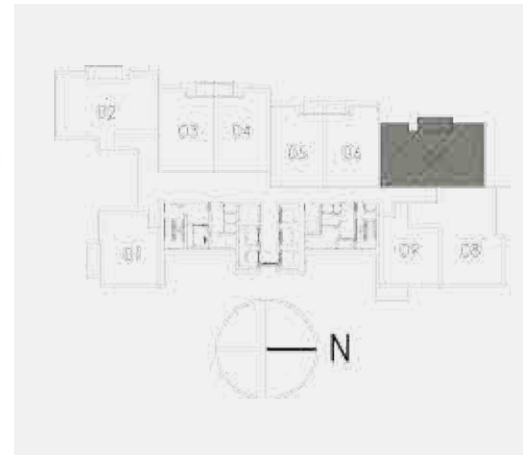
UNIT
07

LEVEL 13-15

SUITE AREA
1,292.91 Sq.ft. / 120.12 Sq.m.

BALCONY AREA
104.51 Sq.ft. / 9.71 Sq.m.

TOTAL AREA
1,397.42 Sq.ft. / 129.83 Sq.m.



Disclaimer: 1. All room dimensions are measured to structural elements and exclude wall finishes and construction tolerances. 2. All dimensions have been provided by our consultant architects. 3. All materials, dimensions & drawings are approximate. Information is subject to change without notice. 4. Actual suite area may vary from the stated area. Drawings not to scale. The developer reserves the right to make revisions. 5. Calculation of suite area is measured as the area bounded by the centre line of demising or partition walls separating one unit from another unit, the exterior face of all exterior walls, and the exterior face of the corridor wall enclosing the adjoining unit. 6. Calculation of balcony area is measured as the area bounded by the centre line of demising or partition walls separating one unit from another unit, the outmost face of the enclosing guard and the external face of the unit adjoining the balcony. 7. The units are measured at typical floor in the building. Columns may vary in size depending on the floor level.



Disclaimer: 1. All room dimensions are measured to structural elements and exclude wall finishes and construction tolerances. 2. All dimensions have been provided by our consultant architects. 3. All materials, dimensions & drawings are approximate. Information is subject to change without notice. 4. Actual suite area may vary from the stated area. Drawings not to scale. The developer reserves the right to make revisions. 5. Calculation of suite area is measured as the area bounded by the centre line of demising or partition walls separating one unit from another unit, the exterior face of all exterior walls, and the exterior face of the corridor wall enclosing the adjoining unit. 6. Calculation of balcony area is measured as the area bounded by the centre line of demising or partition walls separating one unit from another unit, the outmost face of the enclosing guard and the external face of the unit adjoining the balcony. 7. The units are measured at typical floor in the building. Columns may vary in size depending on the floor level.

BOULEVARD POINT

2 BEDROOM

BALCONY

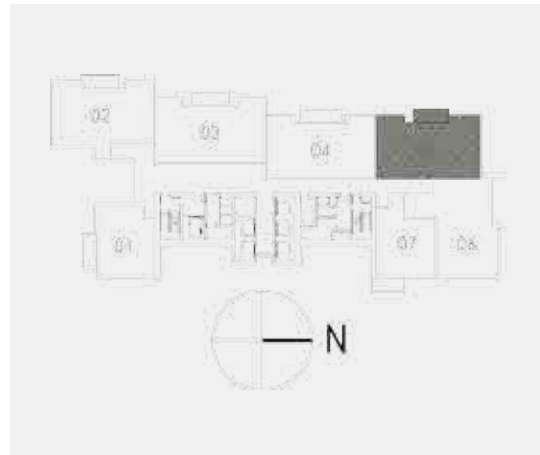
UNIT
05

LEVEL 16-26

SUITE AREA
1,292.83 Sq.ft. / 120.11 Sq.m.

BALCONY AREA
104.51 Sq.ft. / 9.71 Sq.m.

TOTAL AREA
1,397.34 Sq.ft. / 129.82 Sq.m.



BOULEVARD POINT

2 BEDROOM

TERRACE

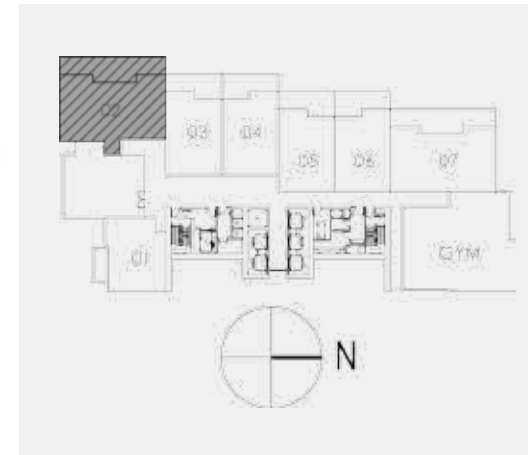
UNIT
02

LEVEL 12

SUITE AREA
1337.92 Sq.ft. / 124.30 Sq.m.

TERRACE AREA
640.28 Sq.ft. / 59.48 Sq.m.

TOTAL AREA
1,978.20 Sq.ft. / 183.78 Sq.m.



Disclaimer: 1. All room dimensions are measured to structural elements and exclude wall finishes and construction tolerances. 2. All dimensions have been provided by our consultant architects. 3. All materials, dimensions & drawings are approximate. Information is subject to change without notice. 4. Actual suite area may vary from the stated area. Drawings not to scale. The developer reserves the right to make revisions. 5. Calculation of suite area is measured as the area bounded by the centre line of demising or partition walls separating one unit from another unit, the exterior face of all exterior walls, and the exterior face of the corridor wall enclosing the adjoining unit. 6. Calculation of balcony area is measured as the area bounded by the centre line of demising or partition walls separating one unit from another unit, the outmost face of the enclosing guard and the external face of the unit adjoining the balcony. 7. The units are measured at typical floor in the building. Columns may vary in size depending on the floor level.



Disclaimer: 1. All room dimensions are measured to structural elements and exclude wall finishes and construction tolerances. 2. All dimensions have been provided by our consultant architects. 3. All materials, dimensions & drawings are approximate. Information is subject to change without notice. 4. Actual suite area may vary from the stated area. Drawings not to scale. The developer reserves the right to make revisions. 5. Calculation of suite area is measured as the area bounded by the centre line of demising or partition walls separating one unit from another unit, the exterior face of all exterior walls, and the exterior face of the corridor wall enclosing the adjoining unit. 6. Calculation of balcony area is measured as the area bounded by the centre line of demising or partition walls separating one unit from another unit, the outmost face of the enclosing guard and the external face of the unit adjoining the balcony. 7. The units are measured at typical floor in the building. Columns may vary in size depending on the floor level.

BOULEVARD POINT

2 BEDROOM

TERRACE

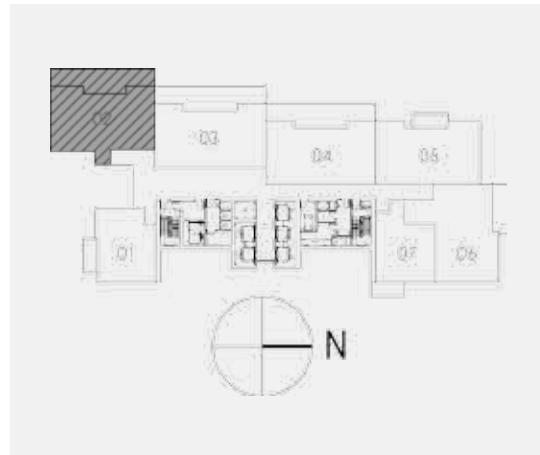
UNIT
02

LEVEL 16

SUITE AREA
1,337.92 Sq.ft. / 124.30 Sq.m.

TERRACE AREA
640.28 Sq.ft. / 59.48 Sq.m.

TOTAL AREA
1,978.20 Sq.ft. / 183.78 Sq.m.



BOULEVARD POINT

2 BEDROOM

TERRACE

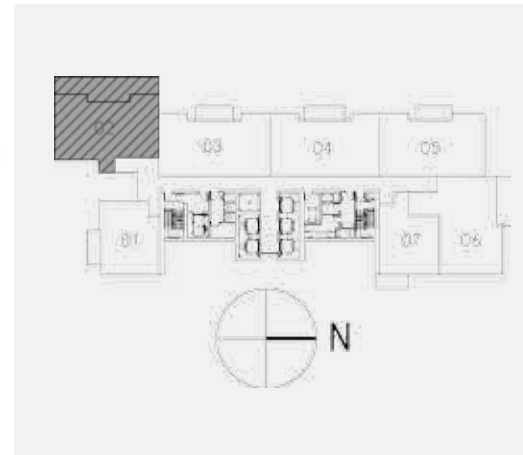
UNIT
02

LEVEL 21

SUITE AREA
1,337.92 Sq.ft. / 124.30 Sq.m.

TERRACE AREA
640.28 Sq.ft. / 59.48 Sq.m.

TOTAL AREA
1,978.20 Sq.ft. / 183.78 Sq.m.



Disclaimer: 1. All room dimensions are measured to structural elements and exclude wall finishes and construction tolerances. 2. All dimensions have been provided by our consultant architects. 3. All materials, dimensions & drawings are approximate. Information is subject to change without notice. 4. Actual suite area may vary from the stated area. Drawings not to scale. The developer reserves the right to make revisions. 5. Calculation of suite area is measured as the area bounded by the centre line of demising or partition walls separating one unit from another unit, the exterior face of all exterior walls, and the exterior face of the corridor wall enclosing the adjoining unit. 6. Calculation of balcony area is measured as the area bounded by the centre line of demising or partition walls separating one unit from another unit, the outmost face of the enclosing guard and the external face of the unit adjoining the balcony. 7. The units are measured at typical floor in the building. Columns may vary in size depending on the floor level.



Disclaimer: 1. All room dimensions are measured to structural elements and exclude wall finishes and construction tolerances. 2. All dimensions have been provided by our consultant architects. 3. All materials, dimensions & drawings are approximate. Information is subject to change without notice. 4. Actual suite area may vary from the stated area. Drawings not to scale. The developer reserves the right to make revisions. 5. Calculation of suite area is measured as the area bounded by the centre line of demising or partition walls separating one unit from another unit, the exterior face of all exterior walls, and the exterior face of the corridor wall enclosing the adjoining unit. 6. Calculation of balcony area is measured as the area bounded by the centre line of demising or partition walls separating one unit from another unit, the outmost face of the enclosing guard and the external face of the unit adjoining the balcony. 7. The units are measured at typical floor in the building. Columns may vary in size depending on the floor level.

BOULEVARD POINT

2 BEDROOM

BALCONY

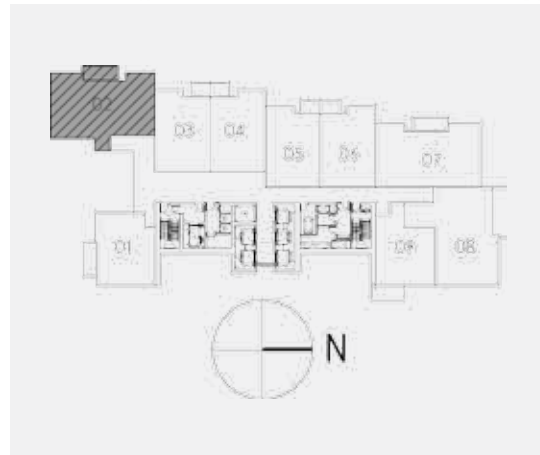
UNIT
02

LEVEL 13-15

SUITE AREA
1,337.92 Sq.ft. / 124.30 Sq.m.

BALCONY AREA
104.51 Sq.ft. / 9.71 Sq.m.

TOTAL AREA
1,442.43 Sq.ft. / 134.01 Sq.m.



BOULEVARD POINT

2 BEDROOM

BALCONY

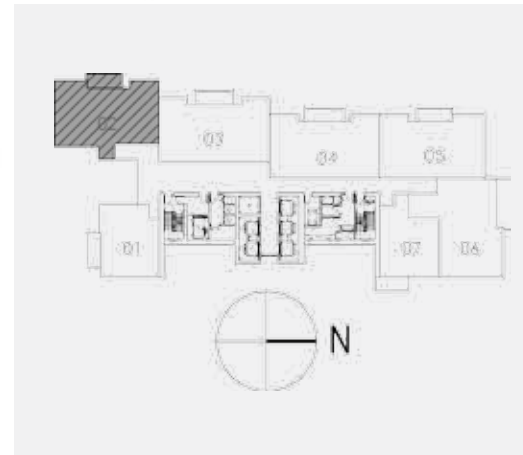
UNIT
02

LEVEL 17-20

SUITE AREA
1,337.92 Sq.ft. / 124.30 Sq.m.

BALCONY AREA
104.51 Sq.ft. / 9.71 Sq.m.

TOTAL AREA
1,442.43 Sq.ft. / 134.01 Sq.m.



Disclaimer: 1. All room dimensions are measured to structural elements and exclude wall finishes and construction tolerances. 2. All dimensions have been provided by our consultant architects. 3. All materials, dimensions & drawings are approximate. Information is subject to change without notice. 4. Actual suite area may vary from the stated area. Drawings not to scale. The developer reserves the right to make revisions. 5. Calculation of suite area is measured as the area bounded by the centre line of demising or partition walls separating one unit from another unit, the exterior face of all exterior walls, and the exterior face of the corridor wall enclosing the adjoining unit. 6. Calculation of balcony area is measured as the area bounded by the centre line of demising or partition walls separating one unit from another unit, the outmost face of the enclosing guard and the external face of the unit adjoining the balcony. 7. The units are measured at typical floor in the building. Columns may vary in size depending on the floor level.



Disclaimer: 1. All room dimensions are measured to structural elements and exclude wall finishes and construction tolerances. 2. All dimensions have been provided by our consultant architects. 3. All materials, dimensions & drawings are approximate. Information is subject to change without notice. 4. Actual suite area may vary from the stated area. Drawings not to scale. The developer reserves the right to make revisions. 5. Calculation of suite area is measured as the area bounded by the centre line of demising or partition walls separating one unit from another unit, the exterior face of all exterior walls, and the exterior face of the corridor wall enclosing the adjoining unit. 6. Calculation of balcony area is measured as the area bounded by the centre line of demising or partition walls separating one unit from another unit, the outmost face of the enclosing guard and the external face of the unit adjoining the balcony. 7. The units are measured at typical floor in the building. Columns may vary in size depending on the floor level.

BOULEVARD POINT

2 BEDROOM

BALCONY

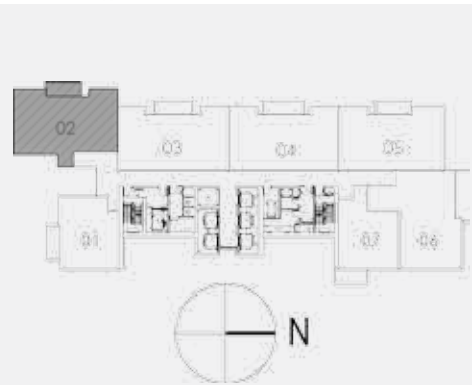
UNIT
02

LEVEL 22-26

SUITE AREA
1,337.92 Sq.ft. / 124.30 Sq.m.

BALCONY AREA
104.51 Sq.ft. / 9.71 Sq.m.

TOTAL AREA
1,442.43 Sq.ft. / 134.01 Sq.m.



BOULEVARD POINT

2 BEDROOM

BALCONY

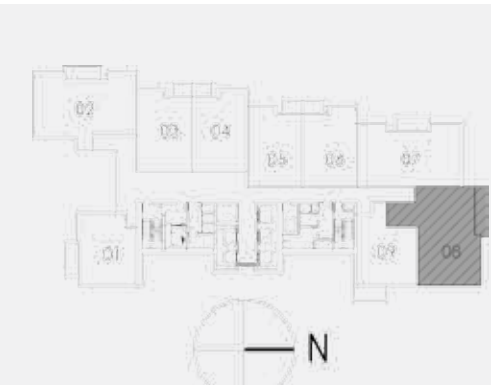
UNIT
08

LEVEL 13-15

SUITE AREA
1,388.13 Sq.ft. / 128.96 Sq.m.

BALCONY AREA
150.04 Sq.ft. / 13.94 Sq.m.

TOTAL AREA
1,538.17 Sq.ft. / 142.90 Sq.m.



Disclaimer: 1. All room dimensions are measured to structural elements and exclude wall finishes and construction tolerances. 2. All dimensions have been provided by our consultant architects. 3. All materials, dimensions & drawings are approximate. Information is subject to change without notice. 4. Actual suite area may vary from the stated area. Drawings not to scale. The developer reserves the right to make revisions. 5. Calculation of suite area is measured as the area bounded by the centre line of demising or partition walls separating one unit from another unit, the exterior face of all exterior walls, and the exterior face of the corridor wall enclosing the adjoining unit. 6. Calculation of balcony area is measured as the area bounded by the centre line of demising or partition walls separating one unit from another unit, the outmost face of the enclosing guard and the external face of the unit adjoining the balcony. 7. The units are measured at typical floor in the building. Columns may vary in size depending on the floor level.



Disclaimer: 1. All room dimensions are measured to structural elements and exclude wall finishes and construction tolerances. 2. All dimensions have been provided by our consultant architects. 3. All materials, dimensions & drawings are approximate. Information is subject to change without notice. 4. Actual suite area may vary from the stated area. Drawings not to scale. The developer reserves the right to make revisions. 5. Calculation of suite area is measured as the area bounded by the centre line of demising or partition walls separating one unit from another unit, the exterior face of all exterior walls, and the exterior face of the corridor wall enclosing the adjoining unit. 6. Calculation of balcony area is measured as the area bounded by the centre line of demising or partition walls separating one unit from another unit, the outmost face of the enclosing guard and the external face of the unit adjoining the balcony. 7. The units are measured at typical floor in the building. Columns may vary in size depending on the floor level.

BOULEVARD POINT

2 BEDROOM

BALCONY

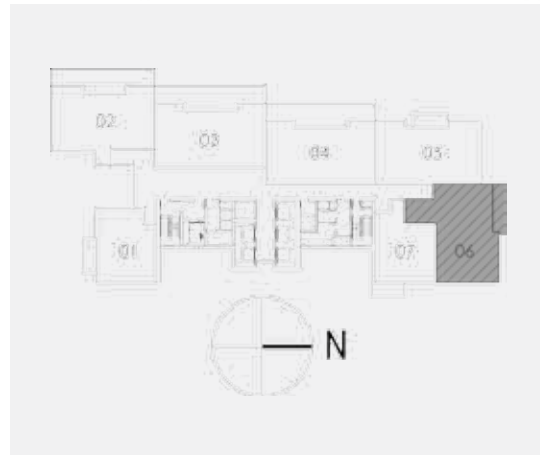
UNIT
06

LEVEL 16-26

SUITE AREA
1,388.13 Sq.ft. / 128.96 Sq.m.

BALCONY AREA
150.04 Sq.ft. / 13.94 Sq.m.

TOTAL AREA
1,538.17 Sq.ft. / 142.90 Sq.m.



BOULEVARD POINT

2 BEDROOM

BALCONY

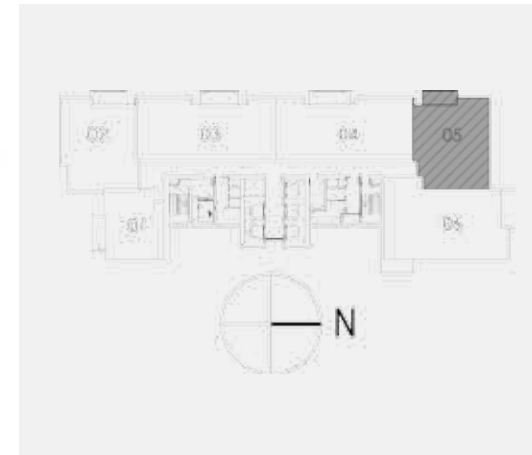
UNIT
05

LEVEL 28-50 & 52-59

SUITE AREA
1,323.53 Sq.ft. / 122.96 Sq.m.

BALCONY AREA
104.51 Sq.ft. / 9.71 Sq.m.

TOTAL AREA
1,428.04 Sq.ft. / 132.67 Sq.m.



Disclaimer: 1. All room dimensions are measured to structural elements and exclude wall finishes and construction tolerances. 2. All dimensions have been provided by our consultant architects. 3. All materials, dimensions & drawings are approximate. Information is subject to change without notice. 4. Actual suite area may vary from the stated area. Drawings not to scale. The developer reserves the right to make revisions. 5. Calculation of suite area is measured as the area bounded by the centre line of demising or partition walls separating one unit from another unit, the exterior face of all exterior walls, and the exterior face of the corridor wall enclosing the adjoining unit. 6. Calculation of balcony area is measured as the area bounded by the centre line of demising or partition walls separating one unit from another unit, the outmost face of the enclosing guard and the external face of the unit adjoining the balcony. 7. The units are measured at typical floor in the building. Columns may vary in size depending on the floor level.



Disclaimer: 1. All room dimensions are measured to structural elements and exclude wall finishes and construction tolerances. 2. All dimensions have been provided by our consultant architects. 3. All materials, dimensions & drawings are approximate. Information is subject to change without notice. 4. Actual suite area may vary from the stated area. Drawings not to scale. The developer reserves the right to make revisions. 5. Calculation of suite area is measured as the area bounded by the centre line of demising or partition walls separating one unit from another unit, the exterior face of all exterior walls, and the exterior face of the corridor wall enclosing the adjoining unit. 6. Calculation of balcony area is measured as the area bounded by the centre line of demising or partition walls separating one unit from another unit, the outmost face of the enclosing guard and the external face of the unit adjoining the balcony. 7. The units are measured at typical floor in the building. Columns may vary in size depending on the floor level.

BOULEVARD POINT

2 BEDROOM

BALCONY

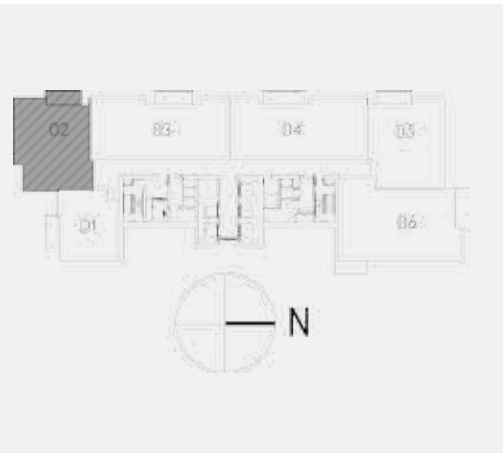
UNIT
02

LEVEL 28-50 & 52-59

SUITE AREA
1,337.53 Sq.ft. / 124.26 Sq.m.

BALCONY AREA
104.51 Sq.ft. / 9.71 Sq.m.

TOTAL AREA
1,442.04 Sq.ft. / 133.97 Sq.m.



BOULEVARD POINT

3 BEDROOM

BALCONY

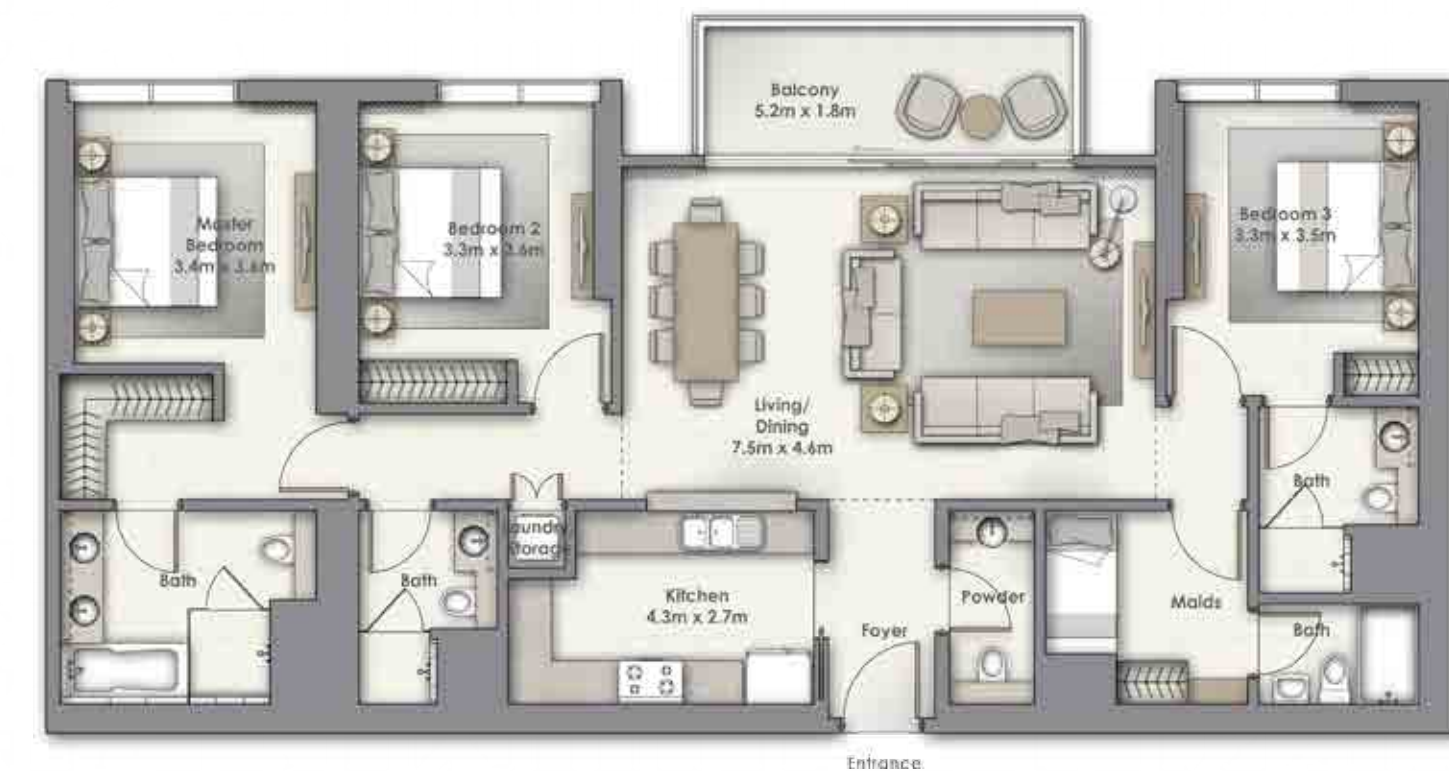
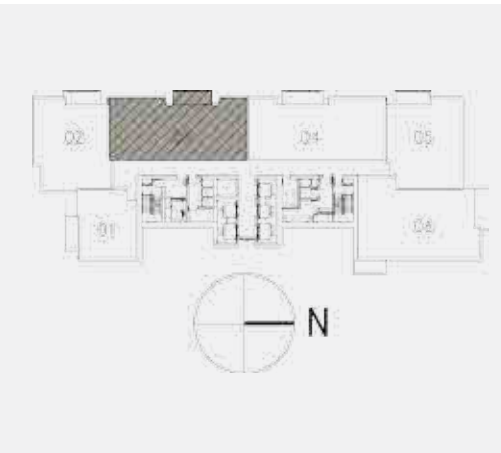
UNIT
03

LEVEL 28-50 & 52-59

SUITE AREA
1,713.38 Sq.ft. / 159.18 Sq.m.

BALCONY AREA
115.30 Sq.ft. / 10.71 Sq.m.

TOTAL AREA
1,828.68 Sq.ft. / 169.89 Sq.m.



Disclaimer: 1. All room dimensions are measured to structural elements and exclude wall finishes and construction tolerances. 2. All dimensions have been provided by our consultant architects. 3. All materials, dimensions & drawings are approximate. Information is subject to change without notice. 4. Actual suite area may vary from the stated area. Drawings not to scale. The developer reserves the right to make revisions. 5. Calculation of suite area is measured as the area bounded by the centre line of demising or partition walls separating one unit from another unit, the exterior face of all exterior walls, and the exterior face of the corridor wall enclosing the adjoining unit. 6. Calculation of balcony area is measured as the area bounded by the centre line of demising or partition walls separating one unit from another unit, the outmost face of the enclosing guard and the external face of the unit adjoining the balcony. 7. The units are measured at typical floor in the building. Columns may vary in size depending on the floor level.



Disclaimer: 1. All room dimensions are measured to structural elements and exclude wall finishes and construction tolerances. 2. All dimensions have been provided by our consultant architects. 3. All materials, dimensions & drawings are approximate. Information is subject to change without notice. 4. Actual suite area may vary from the stated area. Drawings not to scale. The developer reserves the right to make revisions. 5. Calculation of suite area is measured as the area bounded by the centre line of demising or partition walls separating one unit from another unit, the exterior face of all exterior walls, and the exterior face of the corridor wall enclosing the adjoining unit. 6. Calculation of balcony area is measured as the area bounded by the centre line of demising or partition walls separating one unit from another unit, the outmost face of the enclosing guard and the external face of the unit adjoining the balcony. 7. The units are measured at typical floor in the building. Columns may vary in size depending on the floor level.

BOULEVARD POINT

3 BEDROOM

BALCONY

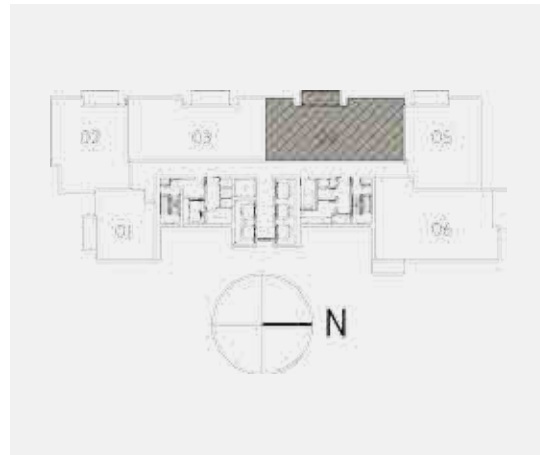
UNIT
04

LEVEL 28-50 & 52-59

SUITE AREA
1,713.38 Sq.ft. / 159.18 Sq.m.

BALCONY AREA
115.30 Sq.ft. / 10.71 Sq.m.

TOTAL AREA
1,828.68 Sq.ft. / 169.89 Sq.m.



BOULEVARD POINT

3 BEDROOM

BALCONY

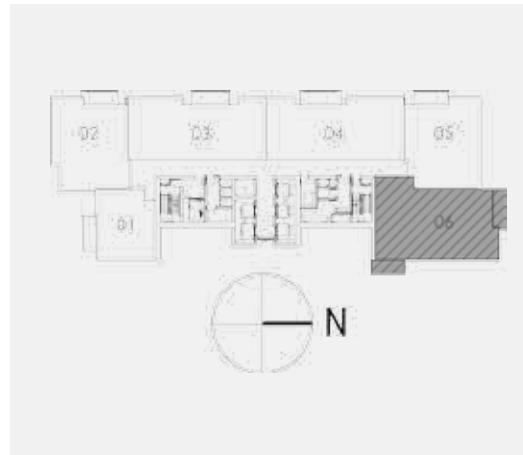
UNIT
06

LEVEL 28-50 & 52-59

SUITE AREA
1,902.74 Sq.ft. / 176.77 Sq.m.

BALCONY AREA
219.34 Sq.ft. / 20.38 Sq.m.

TOTAL AREA
2,122.08 Sq.ft. / 197.15 Sq.m.



Disclaimer: 1. All room dimensions are measured to structural elements and exclude wall finishes and construction tolerances. 2. All dimensions have been provided by our consultant architects. 3. All materials, dimensions & drawings are approximate. Information is subject to change without notice. 4. Actual suite area may vary from the stated area. Drawings not to scale. The developer reserves the right to make revisions. 5. Calculation of suite area is measured as the area bounded by the centre line of demising or partition walls separating one unit from another unit, the exterior face of all exterior walls, and the exterior face of the corridor wall enclosing the adjoining unit. 6. Calculation of balcony area is measured as the area bounded by the centre line of demising or partition walls separating one unit from another unit, the outmost face of the enclosing guard and the external face of the unit adjoining the balcony. 7. The units are measured at typical floor in the building. Columns may vary in size depending on the floor level.



Disclaimer: 1. All room dimensions are measured to structural elements and exclude wall finishes and construction tolerances. 2. All dimensions have been provided by our consultant architects. 3. All materials, dimensions & drawings are approximate. Information is subject to change without notice. 4. Actual suite area may vary from the stated area. Drawings not to scale. The developer reserves the right to make revisions. 5. Calculation of suite area is measured as the area bounded by the centre line of demising or partition walls separating one unit from another unit, the exterior face of all exterior walls, and the exterior face of the corridor wall enclosing the adjoining unit. 6. Calculation of balcony area is measured as the area bounded by the centre line of demising or partition walls separating one unit from another unit, the outmost face of the enclosing guard and the external face of the unit adjoining the balcony. 7. The units are measured at typical floor in the building. Columns may vary in size depending on the floor level.

For more information please contact:

S O C | E T É
REAL ESTATE

 | **+971 4 880 5799**

 | **+971 52 949 6289**

 | **info@societerealestate.ae**